

**Rampion 2 Wind Farm**  
**Category 6:**  
**Environmental Statement**  
**Volume 4, Appendix 5.4: Cumulative**  
**effects assessment shortlisted**  
**developments**  
**Date: August 2023**  
**Revision A**

Document Reference: 6.4.5.4  
Pursuant to: APFP Regulation 5 (2) (a)  
Ecodoc number: 004866464-01



## Document revisions

Revision	Date	Status/reason for issue	Author	Checked by	Approved by
A	04/08/2023	Final for DCO Application	WSP	RED	RED

# Contents

---

<b>1.</b>	<b>Introduction</b>	<b>3</b>
<b>2.</b>	<b>Offshore shortlisted other developments</b>	<b>5</b>
<b>3.</b>	<b>Onshore shortlisted other developments</b>	<b>25</b>
3.2	Sources	49
3.3	References	51

---

## List of Tables

Table 2-1	Shortlisted other developments (offshore)	5
Table 3-1	Shortlisted other developments (onshore)	25
Table 3-2	Sources of information for developments considered in onshore CEA	49

---

## List of Annexes

Annex A	Figures:
Figure 5.4.1	Offshore cumulative effects shortlist projects
Figure 5.4.2	Onshore cumulative effects assessment shortlist projects – DCO and TWAO Projects
Figure 5.4.3a – c	Onshore cumulative effects assessment shortlist projects – TCPA projects
Figure 5.4.4a – c	Onshore cumulative effects assessment shortlist projects – Strategic Local Plan sites

Page intentionally blank

# 1. Introduction

---

- 1.1.1 A key requirement of the Cumulative Effects Assessment (CEA) is to identify those projects, plans and activities with which Rampion 2 may interact to produce a cumulative effect. These interactions may arise within the construction, operation and maintenance, or decommissioning phases of the Proposed Development.
- 1.1.2 The CEA long list was developed based on the methodology outlined in **Chapter 5: Approach to the EIA, Volume 2** of the ES (Document Reference: 6.2.5). Once the CEA long list was collated, all projects, plans, and activities have been individually screened based on the data available, and the potential for interactions on a conceptual, physical, and temporal basis with each technical aspect of the Environmental Statement (ES). The 'other developments' that were then 'screened in' have been carried forward into the CEA of the technical aspect chapters (**Chapters 6: Coastal processes to 29: Climate change, Volume 2** of the ES (Document References: 6.2.6 to 6.2.29)). The other developments screened in to the CEA are presented in the offshore and onshore short lists presented in **Table 2-1** and **Table 3-1** respectively.
- 1.1.3 The following criteria has been applied to the screening of the long list for other developments:
- Screened into the CEA:
    - ▶ other developments which are considered as part of the baseline but the effects of which are not fully determined/realised; and/or
    - ▶ where there is a potential for a cumulative effect to occur (based upon available information and professional judgement).
  - Screened out of the CEA:
    - ▶ other developments which are considered as part of the baseline environment;
    - ▶ where there is low data confidence (therefore a meaningful assessment cannot be undertaken);
    - ▶ where no potential impact-receptor pathway exists;
    - ▶ where there is no potential for a spatial effect interaction; and
    - ▶ where there is no potential for a temporal effect interaction.
- 1.1.4 These criteria ensure a clear justification for screening other developments in or out. Further detail on the other development screening criteria is provided in **Chapter 5: Approach to the EIA, Volume 2** of the ES (Document Reference: 6.2.5).
- 1.1.5 Only where there is the potential for both spatial and temporal interaction between effects arising from Rampion 2 and from one or more of the other developments identified, is a cumulative effect taken forward for consideration in the CEA. The screening process for the long list of other developments provides a record of

those screened in or out for further consideration within the CEA on the basis of one or more of these criteria.

- 1.1.6 In order to focus the aspect specific CEAs presented in **Chapters 6: Coastal processes to 29: Climate change, Volume 2** of the ES (Document References: 6.2.6 to 6.2.29), the screened long list is subject to further aspect specific screening to identify those relevant other developments within the Zols of Rampion 2 for each technical aspect. The technical aspect specific screening distances used to refine the screened long list into technical aspect specific short lists (along with justifications for the distances used) are provided in **Chapter 5: Approach to the EIA, Volume 2** of the ES (Document Reference: 6.2.5).
- 1.1.7 This approach has been carried out in accordance with the EIA Regulations 2017 and Planning Inspectorate (2019) *Advice Note Seventeen: Cumulative effects assessment* relevant to NSIPs. In relation to the offshore elements, the CEA is consistent with the guidance provided by RenewableUK and the Natural Environment Research Council (NERC) published guidelines (RenewableUK and NERC, 2013; specifically Guiding Principles 4 and 7) on the undertaking of the cumulative effects assessment.

## 2. Offshore shortlisted other developments

2.1.1 **Table 2-1** lists the offshore 'other developments' identified for inclusion in the CEA. The locations of these developments are also shown in **Figure 5.4.1, Annex A**.

**Table 2-1 Shortlisted other developments (offshore)**

ID	Application reference	Date of application and status of development	Development name	Development type	Distance to Rampion 2 offshore export cable corridor (km)	Distance to Rampion 2 array area (km)	Confidence in assessment	Tier	Overlap in temporal scope
<b>W1</b>	EN010112	Proposed	Awel y Mor	Offshore wind farm	363.3	376	High	1	Yes, overlap between the construction/operational period and the construction/operational period of Rampion 2. Construction expected 2026-2030. Project operational by 2030.
<b>W2</b>	n/a	Operational	Barrow	Offshore wind farm	398.2	412.1	High	1	Yes, overlap between the operational period and the construction/operational period of Rampion 2
<b>W3</b>	n/a	Operational	Beatrice	Offshore wind farm	834	848.7	High	1	Yes, overlap between the operational period and the construction/operational period of Rampion 2
<b>W4</b>	n/a	Operational	Beatrice Demonstrator	Offshore wind farm	834	848.7	High	1	Yes. Scheduled for decommissioning at the same time as the removal of the Beatrice facilities (2024 – 2029).
<b>W5</b>	n/a	Operational	Blyth Demonstration Site	Offshore wind farm	484.8	498.7	High	1	Yes, overlap between the operational period and the construction/operational period of Rampion 2
<b>W6</b>	n/a	Operational	Borssele I	Offshore wind farm	244.7	263.1	High	1	Yes, overlap between the operational period and the construction/operational period of Rampion 2
<b>W7</b>	n/a	Operational	Borssele II	Offshore wind farm	240.8	259.4	High	1	Yes, overlap between the operational period and the construction/operational period of Rampion 2
<b>W8</b>	n/a	Operational	Burbo Bank	Offshore wind farm	346.5	359.9	High	1	Yes, overlap between the operational period and the construction/operational period of Rampion 2

ID	Application reference	Date of application and status of development	Development name	Development type	Distance to Rampion 2 offshore export cable corridor (km)	Distance to Rampion 2 array area (km)	Confidence in assessment	Tier	Overlap in temporal scope
<b>W9</b>	n/a	Operational	Burbo Bank Extension	Offshore wind farm	346.5	359.9	High	1	Yes, overlap between the operational period and the construction/operational period of Rampion 2
<b>W10</b>	n/a	Under construction	Dieppe – Le Treport (France)	Offshore wind farm	<50	<50	High	1	Unlikely, construction overlap as construction is expected 2019-2023. Overlap between the operational period and the construction/operational period of Rampion 2.
<b>W11</b>	EN010021	Under construction	Dogger Bank A	Offshore wind farm	464.5	462.3	High	1	Unlikely, construction overlap as construction commenced in 2020 and is expected to be complete in 2023, operational overlap only
<b>W12</b>	EN010021	Under construction	Dogger Bank B	Offshore wind farm	477.7	473.2	High	1	Unlikely, construction overlap as construction commenced in 2020 and is expected to be complete in 2024/25, operational overlap only
<b>W13</b>	EN010051	Under construction	Dogger Bank C	Offshore wind farm	509.3	508.7	High	1	Yes, overlap between the construction period as construction expected 2023-2026.
<b>W14</b>	n/a	Operational	Dudgeon	Offshore wind farm	300.7	300.3	High	1	Yes, overlap between the operational period and the construction/operational period of Rampion 2
<b>W15</b>	n/a	Operational	East Anglia One	Offshore wind farm	256.4	240.9	High	1	Yes, overlap between the operational period and the construction/operational period of Rampion 2
<b>W16</b>	EN010077	Consented	East Anglia One North	Offshore wind farm	247.7	261.4	High	1	Yes, overlap between the construction period as construction expected 2023-2026.
<b>W17</b>	EN010056	Consented	East Anglia Three	Offshore wind farm	285.1	298.8	High	1	Yes, overlap between the construction period as construction expected 2023-2026.
<b>W18</b>	EN010078	Consented	East Anglia Two	Offshore wind farm	217.9	232.9	High	1	Yes, overlap between the construction period as construction expected 2023-2026.



ID	Application reference	Date of application and status of development	Development name	Development type	Distance to Rampion 2 offshore export cable corridor (km)	Distance to Rampion 2 array area (km)	Confidence in assessment	Tier	Overlap in temporal scope
W19	n/a	Operational	European Offshore Wind Development Centre	Offshore wind farm	718.6	732.8	High	1	Yes, overlap between the operational period and the construction/operational period of Rampion 2
W20	n/a	Under construction	Fécamp (France)	Offshore wind farm	<50	<50	High	1	Unlikely construction overlap as construction period is expected 2020-2023. Overlap between the operational period and the construction/operational period of Rampion 2.
W21	EN010115	Proposed	Five Estuaries (Gallopier Extension)	Offshore wind farm	209.5	191.1	Medium	2	Yes, main offshore construction works are anticipated to commence in 2029, with some preliminary survey and clearance works potentially taking place in 2026 to 2028. The windfarm is anticipated to be operational in 2030.
W22	00009834	Consented in 2023.	Forthwind Demonstration Project (Methil)	Offshore wind farm	617.8	633.1	High	1	Possible, construction overlap as construction programme not certain at this stage. Construction expected to last 3 months. Overlap between the operational period and the construction/operational period of Rampion 2.
W23	n/a	Operational	Gallopier	Offshore wind farm	202.5	184.4	High	1	Yes, overlap between the operational period and the construction/operational period of Rampion 2
W24	n/a	Operational	Greater Gabbard	Offshore wind farm	202.2	184.2	High	1	Yes, overlap between the operational period and the construction/operational period of Rampion 2. Application submitted and construction expected to commence 2025 for approximately 3-4 years
W25	n/a	Operational	Gunfleet Sands	Offshore wind farm	158.5	146	High	1	Yes, overlap between the operational period and the construction/operational period of Rampion 2
W26	n/a	Operational	Gwynt y Mor	Offshore wind farm	354.8	367.9	High	1	Yes, overlap between the operational period and the construction/operational period of Rampion 2

ID	Application reference	Date of application and status of development	Development name	Development type	Distance to Rampion 2 offshore export cable corridor (km)	Distance to Rampion 2 array area (km)	Confidence in assessment	Tier	Overlap in temporal scope
<b>W27</b>	EN010098	Consented	Hornsea Four	Offshore wind farm	361.6	358.3	High	1	Yes, overlap between the construction period of Rampion 2, as construction expected 2025-2030 for Hornsea Four.
<b>W28</b>	n/a	Operational	Hornsea Project One	Offshore wind farm	380.2	379.2	High	1	Yes, overlap between the operational period and the construction/operational period of Rampion 2
<b>W29</b>	EN010053	Under Construction	Hornsea Project Two	Offshore wind farm	366.5	364.3	High	1	Unlikely, as project commissioning is expected for 2023.
<b>W30</b>	EN010080	Consented	Hornsea Three	Offshore wind farm	387.4	390.4	High	1	Yes, as construction expected 2024-2028 so overlap period with construction/operational period of Rampion 2.
<b>W31</b>	n/a	Operational	Humber Gateway	Offshore wind farm	316.6	324.2	High	1	Yes, overlap between the operational period and the construction/operational period of Rampion 2
<b>W32</b>	n/a	Operational	Hywind Scotland (Hywind 2)	Offshore wind farm	743.2	756.2	High	1	Yes, overlap between the operational period and the construction/operational period of Rampion 2
<b>W33</b>	06781/00010140	Consented	Inch Cape	Offshore wind farm	648.8	634.2	High	1	Unlikely, as construction period expected 2021-2023. Overlap between the operational period and the construction/operation period of Rampion 2.
<b>W34</b>	n/a	Operational	Kentish Flats Extension	Offshore wind farm	133.1	117.2	High	1	Yes, overlap between the operational period and the construction/operational period of Rampion 2
<b>W35</b>	n/a	Operational	Kincardine	Offshore wind farm	692.2	706.3	High	1	Yes, overlap between the operational period and the construction/operational period of Rampion 2
<b>W36</b>	n/a	Operational	Lincs, Lynn & Inner Dowsing	Offshore wind farm	268.2	273.7	High	1	Yes, overlap between the operational period and the construction/operational period of Rampion 2
<b>W37</b>	n/a	Operational	London Array	Offshore wind farm	163	146.1	High	1	Yes, overlap between the operational period and the construction/operational period of Rampion 2

ID	Application reference	Date of application and status of development	Development name	Development type	Distance to Rampion 2 offshore export cable corridor (km)	Distance to Rampion 2 array area (km)	Confidence in assessment	Tier	Overlap in temporal scope
W38	05340/08919/09423	Under Construction	Moray East	Offshore wind farm	837.6	822.8	High	1	Unlikely to overlap with construction period of Rampion 2 as commissioning is expected 2023. Overlap between the operational period and the construction/ operational period of Rampion 2
W39	06764/00009813	Consented	Moray West	Offshore wind farm	834.9	819.9	High	1	Unlikely overlap with construction period as construction expected 2022-2024. Overlap between the operational period and the construction/ operational period of Rampion 2
W40	4579	Under Construction	Neart na Gaoithe	Offshore wind farm	626.1	611.5	High	1	No overlap for the construction period. Overlap between the operational period and the construction/operational period of Rampion 2. Full commissioning expected 2023.
W41	EN010087	Consented	Norfolk Boreas	Offshore wind farm	313.4	324.2	High	1	Yes, overlap between the construction/operational period and the construction/operational period of Rampion 2. Construction expected 2022-2025.
W42	EN010079	Consented	Norfolk Vanguard	Offshore wind farm	294	303.6	High	1	Yes, overlap between the construction/operational period and the construction/ operational period of Rampion 2. construction expected 2024-2028 but currently on hold but 2024-2028 still assumed in CEA
W43	EN010119	Proposed	North Falls (Greater Gabbard Extension)	Offshore wind farm	192	172.8	Medium	2	Unknown, construction programme not available as application has not been submitted.
W44	n/a	Operational	North Hoyle	Offshore wind farm	349.5	362.5	High	1	Yes, overlap between the operational period and the construction/ operational period of Rampion 2
W45	n/a	Operational	Ormonde	Offshore wind farm	412.2	426.1	High	1	Yes, overlap between the operational period and the construction/ operational period of Rampion 2

ID	Application reference	Date of application and status of development	Development name	Development type	Distance to Rampion 2 offshore export cable corridor (km)	Distance to Rampion 2 array area (km)	Confidence in assessment	Tier	Overlap in temporal scope
W46	n/a	Operational	Race Bank	Offshore wind farm	287.1	290.3	High	1	Yes, overlap between the operational period and the construction/operational period of Rampion 2
W48	n/a	Operational	Rampion 1	Offshore wind farm	10.5	0	High	1	Yes, overlap between the operational period and the construction/operational period of Rampion 2
W49	n/a	Operational	Rhyl Flats	Offshore wind farm	353.3	365.9	High	1	Yes, overlap between the operational period and the construction/operational period of Rampion 2
W50	n/a	Operational	Robin Rigg	Offshore wind farm	486.7	500.8	High	1	Yes, overlap between the operational period and the construction/operational period of Rampion 2
W51	n/a	Operational	Scroby Sands	Offshore wind farm	259	252.2	High	1	Yes, overlap between the operational period and the construction/operational period of Rampion 2
W52	010136	Under construction	Seagreen Alpha	Offshore wind farm	656.4	642.1	High	1	Unlikely, as commissioning is expected in 2023. Overlap with operational period.
W53	010137	Under construction	Seagreen Bravo	Offshore wind farm	654.4	640.9	High	1	Unlikely, as commissioning is expected in 2023. Overlap with operational period.
W54	n/a	Operational	Sheringham Shoal	Offshore wind farm	283.6	282.5	High	1	Yes, overlap between the operational period and the construction/operational period of Rampion 2
W55	EN010109	Proposed	Sheringham Shoal and Dudgeon Extension Projects	Offshore wind farm	282.5	283.6	High	1	Yes, overlap between the operational period and the construction/operational period of Rampion 2. Application submitted and construction expected to commence 2025 for approximately 3-4 years
W56	N/a	Consented	Sofia	Offshore wind farm	489.4	487.9	High	1	Yes, overlap between the construction/operational period and the construction/operational period of Rampion 2. Construction expected 2023-2026

ID	Application reference	Date of application and status of development	Development name	Development type	Distance to Rampion 2 offshore export cable corridor (km)	Distance to Rampion 2 array area (km)	Confidence in assessment	Tier	Overlap in temporal scope
W57	n/a	Operational	Teesside	Offshore wind farm	428.1	441.7	High	1	Yes, overlap between the operational period and the construction/operational period of Rampion 2
W58	n/a	Operational	Thanet	Offshore wind farm	164.5	144.2	High	1	Yes, overlap between the operational period and the construction/operational period of Rampion 2
W59	n/a	Operational	Triton Knoll	Offshore wind farm	311.1	307.6	High	1	Yes, overlap between the operational period and the construction/operational period of Rampion 2
W61	n/a	Operational	Walney Phase 1	Offshore wind farm	409	422.8	High	1	Yes, overlap between the operational period and the construction/operational period of Rampion 2
W62	n/a	Operational	Walney Phase 2	Offshore wind farm	413.7	427.4	High	1	Yes, overlap between the operational period and the construction/operational period of Rampion 2
W60	n/a	Operational	Walney Extension	Offshore wind farm	426.6	440	High	1	Yes, overlap between the operational period and the construction/operational period of Rampion 2
W63	n/a	Operational	West of Duddon Sands	Offshore wind farm	400	413.7	High	1	Yes, overlap between the operational period and the construction/operational period of Rampion 2
W64	n/a	Operational	Westermost Rough	Offshore wind farm	333.8	342.2	High	1	Yes, overlap between the operational period and the construction/operational period of Rampion 2
W65	ORMI2170	Consented	Erebus	Offshore wind farm	354.5	356.1	High	1	Yes, overlap between the construction/operational period and the construction/operational period of Rampion 2. Construction expected 2021-2027 and EIA has been submitted
W66	23/00162/PPM	Proposed	Berwick bank	Offshore wind farm	588.3	602.1	High	1	Yes, overlap between the construction/operational period and construction/operational period of Rampion 2. Likely, construction is expected to last 40 months.

ID	Application reference	Date of application and status of development	Development name	Development type	Distance to Rampion 2 offshore export cable corridor (km)	Distance to Rampion 2 array area (km)	Confidence in assessment	Tier	Overlap in temporal scope
<b>W67</b>	EN010136	Proposed (Scoping Report submitted)	Morgan	Offshore wind farm	412.6	425.8	High	2	Possible, construction programme not certain at this stage. Construction expected to last 4 years.
<b>W68</b>	EN010137	Proposed (Scoping Report submitted)	Mona	Offshore wind farm	378.2	391.1	High	2	Possible, construction programme not certain at this stage. Construction expected to last 4 years.
<b>W69</b>	EN010121	Proposed (Scoping Report submitted)	Morecambe	Offshore wind farm	384.5	397.9	High	2	Yes, overlap between the construction/operational period and the construction/operational period of Rampion 2. Construction predicted between 2024 and 2028.
<b>W70</b>	n/a	Proposed	Isle of Man	Offshore wind farm	442.2	455.5	Low	3	Unknown overlap between the construction/operational period and construction/operational period of Rampion 2
<b>W71</b>	VC06D.308178	Proposed (MAC awarded but no EIA)	Dublin	Offshore wind farm	448.3	457.1	High	2	Unknown overlap between the construction/operational period and construction/operational period of Rampion 2
<b>W72</b>	VC27.307638	Proposed (MAC awarded but no EIA)	Codling	Offshore wind farm	434.4	443.2	Medium	2	Unknown overlap between the construction/operational period and construction/operational period of Rampion 2
<b>W73</b>	VC06F.310329	Proposed (MAC awarded but no EIA)	North Irish Sea Array (NISA)	Offshore wind farm	469.9	480.0	Medium	2	Unknown overlap between the construction/operational period and construction/operational period of Rampion 2
<b>W74</b>	VC27.306662	Proposed (MAC awarded but no EIA)	Arklow bank	Offshore wind farm	425.4	432.5	Low	2	Unknown overlap between the construction/operational period and construction/operational period of Rampion 2
<b>W75</b>	OC15.315803	Proposed (MAC awarded but no EIA)	Oriel	Offshore wind farm	506.6	517.3	Low	2	Unknown overlap between the construction/operational period and construction/operational period of Rampion 2
<b>W76</b>	MLA/2021/00324	Consented	Twinhub	Offshore wind farm	355.7	353.3	High	1	Yes, overlap between the construction/operational period and the

ID	Application reference	Date of application and status of development	Development name	Development type	Distance to Rampion 2 offshore export cable corridor (km)	Distance to Rampion 2 array area (km)	Confidence in assessment	Tier	Overlap in temporal scope
									construction/operational period of Rampion 2. Construction expected 2024-2025.
<b>W77</b>	EN010130	Proposed (Scoping Report submitted)	Outer dowsing	Offshore wind farm	318.4	326.1	Medium	2	Yes, overlap between the construction/operational period and the construction/operational period of Rampion 2. Construction expected from 2027 -2030.
<b>T1</b>	21/01623/FUL (expected to be operational by 2025)	Consented	Perpetuus Tidal Energy Centre (PTEC)	Tidal Energy	43.3	47.7	Medium	1	Yes, overlap with construction/operational period and construction/operational period of Rampion 2, as expected to be operational by 2025.
<b>A340</b>	MLA/2012/00320 /7	Active [4]	340 South East IOW Area – Volker Dredging Ltd / CEMEX UK Marine Ltd	Aggregates	30.6	23.7	High	1	Yes, overlap present with construction/operational period of Rampion 2
<b>A351</b>	MLA/2012/00374 /5	Active	351 South East IOW Area – Tarmac Marine Ltd / Volker Dredging Ltd	Aggregates	21.2	15.8	High	1	Yes, overlap present with construction/operational period of Rampion 2
<b>A372 /1</b>	MLA/2017/00227	Active	372/1 North Nab Area – Hanson Aggregates Marine Ltd	Aggregates	28.3	23.3	High	1	Yes, overlap present with construction/operational period of Rampion 2
<b>A395 /1</b>	MLA/2012/00197 /6	Active	395/1 Off Selsey Bill – Aggregates Industries UK Ltd / Kendall Bros (Portsmouth) Ltd / Tarmac Marine Ltd	Aggregates	20.2	15	High	1	Yes, overlap present with construction/operational period of Rampion 2 but active end date is 05/03/2028
<b>A395 /2</b>	MLA/2012/00195 /5	Active	395/2 Off Selsey Bill Area – Kendall Bros (Portsmouth) Ltd / Tarmac Marine Ltd	Aggregates	21	16.9	High	1	Yes, overlap present with construction/operational period of Rampion 2

ID	Application reference	Date of application and status of development	Development name	Development type	Distance to Rampion 2 offshore export cable corridor (km)	Distance to Rampion 2 array area (km)	Confidence in assessment	Tier	Overlap in temporal scope
<b>A396 /1</b>	MLA/2014/00306 /1	Active	396/1 Inner Owers – Tarmac Marine Ltd	Aggregates	0.1	0	High	1	Yes, overlap present with construction/operational period of Rampion 2 but active end date is 07/07/2030
<b>A396 /2</b>	MLA/2014/00306 /2	Active	396/2 Inner Owers – Tarmac Marine Ltd	Aggregates	2	3.42	High	1	Yes, overlap present with construction/operational period of Rampion 2 but active end date is 07/07/2030
<b>A407 /1</b>	MLA/2011/00302 /1	Active	407 St Catherine's Area – CEMEX UK Marine Ltd	Aggregates	38.6	28.4	High	1	Yes, overlap present with construction/operational period of Rampion 2
<b>A435 /1</b>	MLA/2014/00307 /1	Active	435/1 Inner Owers – Hanson Aggregates Marine Ltd	Aggregates	2.7	0.7	High	1	Yes, overlap present with construction/operational period of Rampion 2 but active end date is 07/07/2030
<b>A435 /2</b>	MLA/2014/00307 /1	Active	435/2 Inner Owers – Hanson Aggregates Marine Ltd	Aggregates	6.4	1.5	High	1	Yes, overlap present with construction/operational period of Rampion 2 but active end date is 07/07/2030
<b>A451 /5</b>	MLA/2012/00302 /5	Active	451 St Catherine's Area – Westminster Gravels Ltd	Aggregates	23.5	16.5	High	1	Yes, overlap present with construction/operational period of Rampion 2
<b>A453 /1</b>	MLA/2015/00432 /1	Active	453 Owers Extension – CEMEX UK Marine Ltd.	Aggregates	0.4	5.4	High	1	Yes, overlap present with construction/operational period of Rampion 2 but active end date is 31/03/2032
<b>A458</b>	MLA/2021/00472	Active	458 West Bassurelle Area – Tarmac Marine Ltd / CEMEX UK Marine Ltd	Aggregates	<50	36.4	High	1	Yes, overlap present with construction/operational period of Rampion 2
<b>A460</b>	09999/92501/5	Active	460 South Hastings Area – CEMEX UK Marine Ltd /	Aggregates	<50	34.8	High	1	Yes, overlap present with construction/operational period of Rampion 2



ID	Application reference	Date of application and status of development	Development name	Development type	Distance to Rampion 2 offshore export cable corridor (km)	Distance to Rampion 2 array area (km)	Confidence in assessment	Tier	Overlap in temporal scope
			Tarmac Marne Ltd / Hastings Aggregates Marine Ltd						
A461	MLA/2020/00456	Active	461 Median Deep Area – Volker Dredging Ltd	Aggregates	<50	36.8	High	1	Yes, overlap present with construction/operational period of Rampion 2
A464	MLA/2021/00472	Active	464 West Bassurelle Area – Tarmac Marine Ltd / CEMEX UK Marine Ltd	Aggregates	<50	33.6	High	1	Yes, overlap present with construction/operational period of Rampion 2
A473 /2	MLA/2021/00173 /1	Active	473/2 Greenwich Light East Area - CEMEX UK Marine Ltd	Aggregates	<50	25.7	High	1	Yes, overlap present with construction/operational period of Rampion 2
A473 /2	MLA/2021/00177 /1	Active	473/2 North Area - Hanson Aggregates Marine Ltd / CEMEX UK Marine Ltd	Aggregates	<50	28.5	High	1	Yes, overlap present with construction/operational period of Rampion 2
A474 /1	34400/090416/13	Active	474/1 North Area - Hanson Aggregates Marine Ltd	Aggregates	<50	32.9	High	1	Yes, overlap present with construction/operational period of Rampion 2
A474 /2	34400/090416/13	Active	474/2 North Area - Hanson Aggregates Marine Ltd	Aggregates	<50	37.2	High	1	Yes, overlap present with construction/operational period of Rampion 2
A478	34276/081209/5	Active	478 Area 1 South Area - DEME Building Materials Ltd	Aggregates	<50	29.6	High	1	Yes, overlap present with construction/operational period of Rampion 2
A488	MLA/2015/00431 /1	Active	488 Inner Owers North – Tarmac Marine Ltd.	Aggregates	0.5	5.4	High	1	Yes, overlap present with construction/operational period of Rampion 2. Active end date 07/07/2030

ID	Application reference	Date of application and status of development	Development name	Development type	Distance to Rampion 2 offshore export cable corridor (km)	Distance to Rampion 2 array area (km)	Confidence in assessment	Tier	Overlap in temporal scope
D1	MLA/2021/00434	Open[5]	Open disposal site - Newhaven	Burial at sea	30.3	17	High	1	Yes, overlap present with construction/operational period of Rampion 2
D2	n/a	Open	Open disposal site - Rampion 1	Disposal for the existing Rampion 1 project	10.5	0	High	1	Yes, overlap present with construction/operational period of Rampion 2
D3	n/a	Open	Open disposal site - Shoreham	Maintenance dredging	12.4	12.9	High	1	Yes, overlap present with construction/operational period of Rampion 2
D4	n/a	Open	Open disposal site - Brighton/Rottingdean	Dredged material from Brig on Marina	20.3	13.3	High	1	Yes, overlap present with construction/operational period of Rampion 2
D5	n/a	Open	Open disposal site - Nab Tower	Capital and maintenance dredge material	25	17.6	High	1	Yes, overlap present with construction/operational period of Rampion 2
D6	n/a	Open	Open disposal site - Aquind Cable Site A	Unknown waste type	5	0	High	1	Yes, overlap present with construction/operational period of Rampion 2
D7	n/a	Open	Open disposal site - Aquind Cable Site B	Unknown waste type	32.7	16.2	High	1	Yes, overlap present with construction/operational period of Rampion 2
C1	EN020022	Proposed (application refused, now in re-determination)	AQUIND (UK to France)	Cable	5.4	0	High	1	AQUIND is being redetermined by the Secretary of State so construction period is unknown. But CEA has assumed a worst case of overlap
C2	n/a	Operational	Interconnexion France-Angleterre 2 – IFA-2 HVDC[3]	Cable	10	0.9	High	1	Yes, overlap between the operational period and the construction/operational period of Rampion 2
C3	n/a	Operational	CrossChannel Fibre	Cable	26.7	8.8	Low	1	Yes, overlap with the operational period and the construction/operational period of Rampion 2
C4	CML1929	Construction	Greenlink (UK to Ireland)	Cable	327.7	331	High	1	Unlikely overlap with construction period as construction is expected to

ID	Application reference	Date of application and status of development	Development name	Development type	Distance to Rampion 2 offshore export cable corridor (km)	Distance to Rampion 2 array area (km)	Confidence in assessment	Tier	Overlap in temporal scope
									be complete by 2024. Overlap between the operational period and the construction/operational period of Rampion 2.
TC1	n/a	Active	Atlantic Crossing 1 Century Link	Telecommunication	14.6	30.1	Low	1	Yes, overlap present with construction/operational period of Rampion 2
TC2	n/a	Active	Cowes-Fawley 2 BT8	Telecommunication	<50	<50	Low	1	Yes, overlap present with construction/operational period of Rampion 2
TC3	n/a	Active	Portsmouth Ryde BT8	Telecommunication	31.5	<50	Low	1	Yes, overlap present with construction/operational period of Rampion 2
TC5	n/a	Disused	Rioja 2 BT	Telecommunication	28	42	High	1	No overlap present with construction/operational period of Rampion 2 as the cable is disused.
TC6	n/a	In use	Circle South Zayo	Telecommunication	34	16	Low	1	Yes, overlap with operational period and the construction/ operational period of Rampion 2
CC1	n/a	Proposed	Endurance Carbon Capture	Carbon Capture	381.1	389.4	Medium	3	Possible overlap with construction/operational period of Rampion 2 but construction programme of Endurance Carbon Capture not certain at this stage.
O1	n/a	Proposed	Johnston WHPS - decommissioning	oil and gas	379	387	Medium	3	Possible overlap with decommissioning and construction/operational period of Rampion 2
O2	n/a	Proposed	Johnston - decommissioning	oil and gas	379	386.9	Medium	3	Possible overlap with decommissioning and construction/operational period of Rampion 2
W74	n/a	Proposed	Arklow Bank 2	Offshore wind farm	n/a development relevant to Marine Mammals only	435.0	Low	3	Yes, overlap with construction/operational period and the construction/operational period of Rampion 2. Detailed construction programme is unavailable but

ID	Application reference	Date of application and status of development	Development name	Development type	Distance to Rampion 2 offshore export cable corridor (km)	Distance to Rampion 2 array area (km)	Confidence in assessment	Tier	Overlap in temporal scope
									construction is to commence between 2025-2027.
<b>W78</b>	n/a	Proposed	Kinsale	Offshore wind farm	n/a development relevant to Marine Mammals only	550.0	Low	3	Yes, overlap between the construction/operational period and construction/operational period of Rampion 2. Construction expected 2028-2030.
<b>W80</b>	n/a	Proposed	Inis Ealga	Offshore wind farm	n/a development relevant to Marine Mammals only	485.0	Low	3	Yes, overlap between the construction/operational period and construction/operational period of Rampion 2. Construction expected 2027-2030
<b>W81</b>	n/a	Proposed	Celtic Sea Array	Offshore wind farm	n/a development relevant to Marine Mammals only	450.0	Low	3	Yes, overlap between the construction/operational period and construction/operational period of Rampion 2. Construction expected 2027-2030
<b>W82</b>	n/a	Proposed	North Celtic Sea	Offshore wind farm	n/a development relevant to Marine Mammals only	460.0	Low	3	Yes, overlap between the construction/operational period and construction/operational period of Rampion 2. Construction expected 2026-2030
<b>W83</b>	n/a	Proposed	Blackwater	Offshore wind farm	n/a development relevant to Marine Mammals only	410.0	Low	3	Yes, overlap between the construction/operational period and construction/operational period of Rampion 2. Construction expected 2027-2030
<b>W86</b>	n/a	Proposed	Llyr 1	Offshore wind farm	n/a development relevant to Marine Mammals only	340.0	Low	3	Yes, overlap between the construction/operational period and construction/operational period of Rampion 2. Construction expected construction 2025-2026.
<b>W87</b>	n/a	Proposed	Llyr 2	Offshore wind farm	n/a development relevant to Marine Mammals only	330.0	Low	3	Yes, overlap between the construction/operational period and construction/operational period of Rampion 2. Construction expected construction 2025-2026.

ID	Application reference	Date of application and status of development	Development name	Development type	Distance to Rampion 2 offshore export cable corridor (km)	Distance to Rampion 2 array area (km)	Confidence in assessment	Tier	Overlap in temporal scope
<b>W88</b>	n/a	Proposed	Llywelyn	Offshore wind farm	n/a development relevant to Marine Mammals only	370.0	Low	3	Yes, overlap between the construction/operational period and construction/operational period of Rampion 2. Construction expected 2027-2030.
<b>W89</b>	n/a	Proposed	Gwynt Glas	Offshore wind farm	n/a development relevant to Marine Mammals only	360.0	Low	3	Yes, overlap between the construction/operational period and construction/operational period of Rampion 2. Construction expected 2028-2030.
<b>W90</b>	n/a	Proposed	Petroc	Offshore wind farm	n/a development relevant to Marine Mammals only	350.0	Low	3	Yes, overlap between the construction/operational period and construction/operational period of Rampion 2. Construction expected 2027-2030.
<b>W91</b>	n/a	Proposed	Shelmalere	Offshore wind farm	n/a development relevant to Marine Mammals only	420.0	Low	3	Yes, overlap between the construction/operational period and construction/operational period of Rampion 2. Construction expected 2028-2030.
<b>W93</b>	n/a	Proposed	South Irish Sea	Offshore wind farm	n/a development relevant to Marine Mammals only	420.0	Low	3	Yes, overlap between the construction/operational period and construction/operational period of Rampion 2. Construction expected 2026-2030.
<b>W96</b>	n/a	Proposed	Wicklow	Offshore wind farm	n/a development relevant to Marine Mammals only	440.0	Low	3	Yes, overlap between the construction/operational period and construction/operational period of Rampion 2. Construction expected 2028-2030.
<b>W98</b>	n/a	Proposed	Greystones	Offshore wind farm	n/a development relevant to Marine Mammals only	446.0	Low	3	Yes, overlap between the construction/operational period and construction/operational period of Rampion 2. Construction expected 2027-2030.
<b>W101</b>	n/a	Proposed	Braymore Wind Park	Offshore wind farm	n/a development relevant to Marine Mammals only	496.0	Low	3	Yes, overlap between the construction/operational period and construction/operational period of Rampion 2. Construction expected 2027-2030.

ID	Application reference	Date of application and status of development	Development name	Development type	Distance to Rampion 2 offshore export cable corridor (km)	Distance to Rampion 2 array area (km)	Confidence in assessment	Tier	Overlap in temporal scope
<b>W103</b>	n/a	Proposed	North Channel Wind 1	Offshore wind farm	n/a development relevant to Marine Mammals only	585.0	Low	3	Yes, overlap between the construction/operational period and construction/operational period of Rampion 2. Construction expected 2027-2030.
<b>W104</b>	n/a	Proposed	North Channel Wind 2	Offshore wind farm	n/a development relevant to Marine Mammals only	553.0	Low	3	Yes, overlap between the construction/operational period and construction/operational period of Rampion 2. Construction expected 2027-2030.
<b>W106</b>	n/a	Proposed	Shearwater One	Offshore wind farm	n/a development relevant to Marine Mammals only	693.0	Low	3	Yes, overlap between the construction/operational period and construction/operational period of Rampion 2. Construction expected 2026-2029.
<b>W107</b>	n/a	Proposed	Machair Wind	Offshore wind farm	n/a development relevant to Marine Mammals only	702.0	Low	3	Yes, overlap between the construction/operational period and construction/operational period of Rampion 2. Construction expected 2024-2027.
<b>W111</b>	n/a	Consented	Bombora	Wave	n/a development relevant to Marine Mammals only	330.0	High	1	Unlikely to overlap with construction period as construction expected 2022-2023. Overlap between the operational period and the construction operational period of Rampion 2.
<b>W113</b>	n/a	Development zone	Princess Elizabeth Noordhinder Noord tender	Offshore wind farm	n/a development relevant to Marine Mammals only	200.0	Low	3	Yes, overlap between the construction/operational period and construction/operational period of Rampion 2. Construction expected 2025-2026.
<b>W114</b>	n/a	Consented	Borkum Rifgrund 3	Offshore wind farm	n/a development relevant to Marine Mammals only	430.0	High	1	Yes, overlap between the construction/operational period and construction/operational period of Rampion 2. Construction expected 2023-2025.
<b>W115</b>	n/a	Consented	GoDe wind 3	Offshore wind farm	n/a development relevant to Marine Mammals only	555.0	High	1	Yes. Completion of construction unknown. Construction expected to commence 2023. Overlap between the construction/operational period and

ID	Application reference	Date of application and status of development	Development name	Development type	Distance to Rampion 2 offshore export cable corridor (km)	Distance to Rampion 2 array area (km)	Confidence in assessment	Tier	Overlap in temporal scope
									construction/operational period of Rampion 2.
<b>W116</b>	n/a	Consented	EnBw He Dreiht	Offshore wind farm	n/a development relevant to Marine Mammals only	545.0	High	1	Yes, overlap between the construction/operational period and construction/operational period of Rampion 2. Construction expected 2024-2025.
<b>W117</b>	n/a	Proposed	N-3.7 (North sea cluster - gode wind)	Offshore wind farm	n/a development relevant to Marine Mammals only	560.0	Low	3	Yes, overlap between the construction/operational period and construction/operational period of Rampion 2. Construction expected 2025-2026.
<b>W118</b>	n/a	Proposed	N-3.8 (North sea cluster - Nordsee Two)	Offshore wind farm	n/a development relevant to Marine Mammals only	560.0	Low	3	Yes, overlap between the construction/operational period and construction/operational period of Rampion 2. Construction expected 2025-2027.
<b>W119</b>	n/a	Proposed	N-7.2	Offshore wind farm	n/a development relevant to Marine Mammals only	560.0	Low	3	Yes, overlap between the construction/operational period and construction/operational period of Rampion 2. Construction expected to commence in 2026.
<b>W120</b>	n/a	Operational	Kaskasi	Offshore wind farm	n/a development relevant to Marine Mammals only	665.0	High	1	Possible overlap of the construction period of Rampion 2. Construction expected to commence in 2022. Overlap between the operational period and construction/operational period of Rampion 2.
<b>W121</b>	n/a	Proposed	Hesselo	Offshore wind farm	n/a development relevant to Marine Mammals only	1010.0	Low	3	Yes, overlap between the construction/operational period and construction/operational period of Rampion 2. Construction expected to commence 2026-2027.
<b>W122</b>	n/a	Proposed	Thor	Offshore wind farm	n/a development relevant to Marine Mammals only	835.0	Low	3	Yes, overlap between the construction/operational period and construction/operational period of Rampion 2. Construction expected 2024-2027.

ID	Application reference	Date of application and status of development	Development name	Development type	Distance to Rampion 2 offshore export cable corridor (km)	Distance to Rampion 2 array area (km)	Confidence in assessment	Tier	Overlap in temporal scope
W123	n/a	Proposed	Frederikshavn offshore demo	Offshore wind farm	n/a development relevant to Marine Mammals only	1040.0	Low	3	Yes, overlap between the construction/operational period and construction/operational period of Rampion 2. Construction expected to commence in 2024.
W125	n/a	Under construction	Vesterhav Nord/Sud	Offshore wind farm	n/a development relevant to Marine Mammals only	810.0	High	1	Possible overlap between the construction period. Construction expected to commence in 2022. Overlap between the operational period and construction/operational period of Rampion 2.
W126	n/a	Under construction	Calvados	Offshore wind farm	n/a development relevant to Marine Mammals only	130.0	High	1	Possible overlap between the construction period. Construction expected 2022-2024. Overlap between the operational period and construction/operational period of Rampion 2
W127	n/a	Under Construction	Saint Breuc	Offshore wind farm	n/a development relevant to Marine Mammals only	263.0	High	1	Possible overlap between the construction period. Construction expected to commence 2021-2023. Overlap between the operational period and construction/operational period of Rampion 2
W128	n/a	Proposed	Dunkerque	Offshore wind farm	n/a development relevant to Marine Mammals only	165.0	Low	3	Yes, construction expected to commence in 2025. Construction completion date not known.
W130	n/a	Under construction	Hollandse Kust Zuid Holland I and II	Offshore wind farm	n/a development relevant to Marine Mammals only	320.0	High	1	Unlikely overlap between the construction period. Construction expected to 2021-2023. Overlap between the operational period and construction/operational period of Rampion 2
W131	n/a	Under construction	Hollandse Kust Zuid Holland III and IV	Offshore wind farm	n/a development relevant to Marine Mammals only	320.0	High	1	Unlikely overlap between the construction period. Construction expected to 2021-2023. Overlap between the operational period and construction/operational period of Rampion 2



ID	Application reference	Date of application and status of development	Development name	Development type	Distance to Rampion 2 offshore export cable corridor (km)	Distance to Rampion 2 array area (km)	Confidence in assessment	Tier	Overlap in temporal scope
<b>W132</b>	n/a	Under construction	Hollandse Kust Noord	Offshore wind farm	n/a development relevant to Marine Mammals only	320.0	High	1	Unlikely overlap between the construction period. Construction expected to 2021-2023. Overlap between the operational period and construction/operational period of Rampion 2
<b>W133</b>	n/a	Under construction	Hollandse Kust West Site VI	Offshore wind farm	n/a development relevant to Marine Mammals only	330.0	High	1	Yes, overlap between the construction/operational period and construction/operational period of Rampion 2. Construction expected 2022-2025.
<b>W134</b>	n/a	Proposed	Ten noorden van de Waddeneilanden	Offshore wind farm	n/a development relevant to Marine Mammals only	550.0	Low	3	Yes, overlap between the construction/operational period and construction/operational period of Rampion 2. Construction expected to commence 2026.
<b>W135</b>	n/a	Proposed	Hollandse Kust West Site VII	Offshore wind farm	n/a development relevant to Marine Mammals only	310.0	Low	3	Yes, overlap between the construction/operational period and construction/operational period of Rampion 2. Construction expected to commence in 2027.
<b>W136</b>	n/a	Under construction 2022	Hywind Tampen	Offshore wind farm	n/a development relevant to Marine Mammals only	1000.0	High	1	Unlikely overlap between the construction period. Construction completion date unknown. Overlap between the operational period and construction/operational period of Rampion 2
<b>W137</b>	n/a	Consented (constructing 2023)	Seatwirl S2	Offshore wind farm	n/a development relevant to Marine Mammals only	1020.0	High	1	Unlikely overlap between the construction period. Construction completion date unknown. Overlap between the operational period and construction/operational period of Rampion 2
<b>W139</b>	n/a	Proposed	Dolphyn project	Offshore wind farm	n/a development relevant to Marine Mammals only	715.0	Low	3	Yes, overlap between the construction/operational period and construction/operational period of Rampion 2. Construction expected to commence in 2025.

ID	Application reference	Date of application and status of development	Development name	Development type	Distance to Rampion 2 offshore export cable corridor (km)	Distance to Rampion 2 array area (km)	Confidence in assessment	Tier	Overlap in temporal scope
<b>W140</b>	n/a	Proposed	Beech	Offshore wind farm	n/a development relevant to Marine Mammals only	780.0	Low	3	Yes, overlap between the construction/operational period and construction/operational period of Rampion 2. Construction expected 2024-2027.
<b>W141</b>	n/a	Proposed	Aspen	Offshore wind farm	n/a development relevant to Marine Mammals only	1100.0	Low	3	Yes, overlap between the construction/operational period and construction/operational period of Rampion 2. Construction expected 2024-2027.
<b>W142</b>	n/a	Proposed	ForthWind demo project phase 1	Offshore wind farm	n/a development relevant to Marine Mammals only	635.0	High	1	Yes, overlap between the construction/operational period and construction/operational period of Rampion 2. Construction expected 2028-2030.
<b>W154</b>	n/a	Proposed	Clarus	Offshore wind farm	n/a development relevant to Marine Mammals only	700.0	Low	3	Yes, overlap between the construction/operational period and construction/operational period of Rampion 2. Construction expected 2028-2030.
<b>W159</b>	n/a	Proposed	West of Orkney	Offshore wind farm	n/a development relevant to Marine Mammals only	935.0	Low	3	Yes, overlap between the construction/operational period and construction/operational period of Rampion 2. Construction expected 2028-2030.
<b>W161</b>	n/a	Proposed	Caledonia	Offshore wind farm	n/a development relevant to Marine Mammals only	825.0	Low	3	Yes (construction 2028-2030)

### 3. Onshore shortlisted other developments

3.1.1 **Table 3-1** lists the onshore 'other developments' identified for inclusion in the CEA. The locations of these other developments are also shown in **Figures 5.4.2 – 5.4.4, Annex A**.

**Table 3-1 Shortlisted other developments (onshore)**

ID	Planning Authority	Application reference	Date of application and status of development	Development name	Applicant	Brief description of 'other development'	Development type	Location	Distance from proposed DCO Order Limits (m)	Confidence in assessment	Tier <sup>1</sup>	Overlap in temporal scope
1	Planning Inspectorate	TR010045	Pre-application: Scoping Opinion published 14/04/2010	A27 Arundel Bypass Project	Highways England	A new dual carriageway bypass linking together the two existing dual carriageway sections of the road to replace the existing single carriageway way road.	Highways	From Crossbush junction to the East of Arundel to near Yapton Lane to the west of Arundel	892	Medium	2	Anticipated that construction will take place between 2024 - 2030.
2	Planning Inspectorate	No reference	Pre-application: no documents submitted	Hampshire Water Transfer and Water Recycling Project	Southern Water Services Limited	Proposed water recycling plant and associated underground pipelines at Harts Farm Way, Havant.	Utilities infrastructure (water)	Harts Farm Way, Havant	5,417	Low	3	Anticipated that construction will take place between 2027 - 2032 <sup>2</sup>
3	Planning Inspectorate	No reference	Pre-application: no documents submitted	A27 Worthing and Lancing Improvement	Highways England	A highways scheme that would improve travel conditions, supporting objectives relating to safety, reliability, connectivity, economy, and the integration of transport modes of a stretch of the A27 between Worthing and Lancing.	Highways	A27 between Worthing and Lancing	5,944	Low	3	Anticipated that construction will take place between 2024 - 2030.

<sup>1</sup> Please refer to **Table 5-5 of Chapter 5: Approach to EIA, Volume 2** of the ES (Document Reference: 6.2.5) for definition of Tiers.

<sup>2</sup> Programme based on information presented during public consultation events.

ID	Planning Authority	Application reference	Date of application and status of development	Development name	Applicant	Brief description of 'other development'	Development type	Location	Distance from proposed DCO Order Limits (m)	Confidence in assessment	Tier <sup>1</sup>	Overlap in temporal scope
4	Planning Inspectorate	TR020005	Pre-application: Scoping Opinion published 11/10/2019	Gatwick Airport – Northern Runway Project	Gatwick Airport Limited	The amendment of Gatwick Airport to support dual runway operations through the routine use of the existing northern runway and to accommodate up to 74 million passengers per annum. The development will include amendments to taxiways, terminals and ancillary facilities, highways, and rivers; as well as temporary construction works, mitigation works and other associated development.	Aviation	Gatwick Airport	18,585	Medium	2	Anticipated that construction will take place between 2025 - 2040. <sup>3</sup>
5	Planning Inspectorate	EN020022	DCO granted (following appeal) 09/03/2023	AQUIND Connector	AQUIND Ltd	High voltage direct current marine and underground electric power transmission link between the south of England and Normandy in France. Onshore cable located east of Portsmouth running northwards to west of Horndean.	Utilities infrastructure (energy)	Portsmouth northwards to west of Horndean	34,446	High	1	Anticipated that construction will take place between 2024 – 2030. <sup>4</sup>
6	Planning Inspectorate	TR010030	DCO granted 12/05/2022	M25 Junction 10 / A3 Wisley Interchange	Highways England	Upgrading the junction with the A3 Wisley Interchange to reduce congestion, improve safety and	Highways	M25 junction 10 / A3 Wisley interchange	39,243	High	1	Construction programme Q2 2022 - Q2 2025.

<sup>3</sup> Programme based on information provided in the Scoping Report and expected DCO application submission date.

<sup>4</sup> Programme based on information provided in the Environmental Statement and delays following DCO refusal/appeal.

ID	Planning Authority	Application reference	Date of application and status of development	Development name	Applicant	Brief description of 'other development'	Development type	Location	Distance from proposed DCO Order Limits (m)	Confidence in assessment	Tier <sup>1</sup>	Overlap in temporal scope
						create more reliable journeys.						
7	Planning Inspectorate	EN070005	DCO granted 07/10/2020	Southampton to London Pipeline Project	Esso Petroleum Company Ltd	97km of new steel pipeline, approximately 300mm in diameter; a new "pigging" station at Boorley Green; associated pipeline infrastructure; and modifications to the pigging station at the Esso West London Terminal storage facility.	Utilities infrastructure (other)	Between Boorley Green (Hampshire) and Esso West London Terminal storage facility Hounslow	44,805	High	1	Construction programme 2021 - 2025.
8	Transport Infrastructure Planning Unit	No reference	Transport Works Act Order granted 09/05/2023	The Rother Valley Railway (Bodiam to Robertsbridge Junction)	Rother Valley Railways Limited	Approval of the application by Rother Valley Railway Company to reinstate a section of railway track between Udiam and Robertsbridge in the county of East Sussex, district of Rother. The section links to existing sections of track that would complete the rail link between Bodiam and Robertsbridge Junction.	Rail	Udiam to Robertsbridge in East Sussex	51,069	High	1	Anticipated that construction will take place between 2024 – 2027.
9	Planning Inspectorate	TR010055	DCO decision pending: application submitted 15/12/2022	M3 Junction 9 Improvement	Highways England	Development and delivery of a scheme of works for increasing capacity, including replacement of a circulatory roundabout with a dumbbell roundabout,	Highways	Adjacent to Winnal industrial estate, Winchester, north of Alresford Road B3404	57,754	High	1	Anticipated that construction will take place between 2024 - 2030.

ID	Planning Authority	Application reference	Date of application and status of development	Development name	Applicant	Brief description of 'other development'	Development type	Location	Distance from proposed DCO Order Limits (m)	Confidence in assessment	Tier <sup>1</sup>	Overlap in temporal scope
						conversion of the M3 south of Junction 9 to dual three lane motorway, realignment of slip roads, the addition of new structures, and improvements to safety features, signage, and technology.						
10	Planning Inspectorate	EN010135	Pre-application: Scoping Opinion published 30/05/2022	Stonestreet Green Solar	EPL 001 Limited	Solar photovoltaic array plus energy storage with associated infrastructure and grid connection, with a generating capacity greater than 50MW.	Energy generation (solar)	Land at Aldington, southeast of Ashford in Kent	82,903	Medium	2	Anticipated that construction will take place between 2025 - 2026.
11	Arun	M/16/22/PL	Application pending a decision: submitted 11/02/2022	Bognor Regis Golf Club	Hallam Land Management	Laying out of an 18 hole golf course, a nine hole golf course, practice greens, and a driving range including a buggy compound; the formation of a new access onto the A259; construction of a club house with associated golf club facilities; the construction of a maintenance building and external area of hardstanding; the laying of parking, new roads, and paths; new landscape planting; surface water drainage	Leisure	Land South of Grevatts Lane/A259 Climping	457	High	1	Anticipated that construction will take place 2024 – 2029.

ID	Planning Authority	Application reference	Date of application and status of development	Development name	Applicant	Brief description of 'other development'	Development type	Location	Distance from proposed DCO Order Limits (m)	Confidence in assessment	Tier <sup>1</sup>	Overlap in temporal scope
						basins and water storage reservoirs; and other earth works and infrastructure.						
12	Arun	LU/287/17/PL	Application approved 19/12/2017	46a & 47 Pier Road & Land north of Clifton Road	Emsdale Residential Limited	Demolition of existing buildings, change of use and erection of one building (office at ground floor, eight dwellings at first and second floor level).	Mixed use	46a & 47 Pier Road & Land north of Clifton Road Littlehampton BN17 5LW	650	High	1	Anticipated that construction will take place 2018 – 2023.
13	Arun	CM/48/21/RES	Application pending a decision: submitted 31/08/2021	Land at Climping Arun Local Plan site SD10 (see ID63)	Climping Homes	Approval of reserved matters following the grant of CM/1/17/OUT [Project ID 14] for the erection of 300 No dwellings and a building within use Class E, together with public open space, local play areas, local equipped areas for play, and ancillary works, including car parking and drainage arrangements, with access off Church Lane & Horsemere Green Lane.	Mixed use	Land to the West of Church Lane South of Horsemere Green Lane Climping	Within proposed DCO Order Limits	High	1	Anticipated that construction will take place 2024 – 2030.

ID	Planning Authority	Application reference	Date of application and status of development	Development name	Applicant	Brief description of 'other development'	Development type	Location	Distance from proposed DCO Order Limits (m)	Confidence in assessment	Tier <sup>1</sup>	Overlap in temporal scope
14	Arun	CM/1/17/OUT	Application approved (after appeal) 28/09/2018	Land West of Church Lane & South of Horsemere Green Lane Climping  Arun Local Plan site SD10 (see ID63)	Mulgrave Properties LLP	Outline application for the erection of up to 300 dwellings and ancillary development including open space, a building within use Class D1 (Non-Residential Institutions) (up to 875 sqm), and a building for use Class A1 (Shops) (up to 530 sqm).	Mixed use	Land West of Church Lane & South of Horsemere Green Lane Climping	Within proposed DCO Order Limits	High	1	Anticipated that construction will take place 2024 – 2030.
15	West Sussex	WSCC/037/19	Application approved 06/08/2020	Burndell Road	TJ Waste & Recycling Limited	Proposed inert waste recycling facility, with new building, hardstanding, car parking, boundary treatment and re-aligned access to the agricultural unit.	Industrial (waste)	Burndell Road, Yapton, BN18 0HR	1,490	High	1	Anticipated that construction will take place 2020 – 2025.
16	Arun	LU/238/20/OUT	Application approved 22/04/2022	Land west of Bridge Road Roundabout	Hampton Quay Holdings	Outline planning permission for demolition of existing treatment works and redevelopment of a former camp site on the edge of the River Arun to provide up to 105 homes, 100sqm of Class A1 Shops use, 220sqm of Class A3 Restaurant use and 420m of pontoons to provide approximately 32 leisure moorings along with associated landscaping, sluice gate, flood defence works, car parking	Mixed use	Land west of Bridge Road Roundabout, Littlehampton, BN17 5DF	146	High	1	Anticipated that construction will take place 2022 – 2027.



ID	Planning Authority	Application reference	Date of application and status of development	Development name	Applicant	Brief description of 'other development'	Development type	Location	Distance from proposed DCO Order Limits (m)	Confidence in assessment	Tier <sup>1</sup>	Overlap in temporal scope
						and highways works, including access.						
17	West Sussex	WSCC/015/22	Application pending a decision: submitted 10/06/2022	Rudford Industrial Estate	South Coast Skips Ltd	Change of use of existing hangar building from Class B2/B8 industrial/storage to sui generis, installation of combined heat and power plant, receipt of up to 15,000 tonnes per year of feedstock, generation, and export of up to 1.25mW electricity and 5.5mW.	Industrial (waste)	Unit H9-H10 Ford Road, Arundel, BN18 0BD	375	High	1	Anticipated that construction will take place 2023 – 2028.
18	Arun	LU/116/21/PL	Application approved 26/04/2021	Land to the South of Littlehampton Academy	BoKlok Housing Ltd	Erection of 112 No. residential units with access from Fitzalan Road, open space, hard and soft landscaping works, internal roads/footways, car and cycle parking, substation, bin store and associated engineering and infrastructure works.	Residential	Land South Of The Littlehampton Academy Fitzalan Road Littlehampton BN17 6ED	1,617	High	1	Anticipated that construction will take place 2024 – 2026.

ID	Planning Authority	Application reference	Date of application and status of development	Development name	Applicant	Brief description of 'other development'	Development type	Location	Distance from proposed DCO Order Limits (m)	Confidence in assessment	Tier <sup>1</sup>	Overlap in temporal scope
19	Arun	LU/55/15/OUT	Application approved (after appeal) 28/09/2016	Land South of The Littlehampton Academy	West Sussex County Council	Application for outline planning permission with some matters reserved for 68 dwellings (resubmission following LU/51/14).	Residential	Land South of The Littlehampton Academy Littlehampton BN17 6DQ	1,617	High	1	Construction complete.
20	Arun	CM/56/19/PL	Application approved 29/05/2020	Unit H6 Rudford Industrial Estate	Dudman Investments Limited	Erection and operation of concrete batching plant to include distribution of concrete from the facility (2,120sqm).	Industrial (materials)	Unit H6 Rudford Industrial Estate Ford Road Ford BN18 0BD	392	High	1	Anticipated that construction will take place 2021 – 2026.
21	Arun	F/16/21/PL	Application approved 23/11/2021	HM Prison Ford Road	Her Majesty's Prison and Probation MoJ Property Directorat	Installation of a 239.2MWh solar photovoltaic generation system.	Energy generation (solar)	HM Prison Ford, Ford Rd, Ford, BN18 0BX	199	High	1	Anticipated that construction will take place 2022 – 2027.
22	Arun	Y/98/18/RES	Application approved 17/09/2019	Land off Burndell Road	Bovis Homes	Approval of reserved matters (access, appearance, landscaping, layout, and scale) following outline permission Y/19/16/OUT [Project ID 23] for 108 residential dwellings, with associated parking, road/footway/cycleway provision, open space, landscaping, surface water attenuation and ancillary works.	Residential	Land off Burndell Road Yapton, BN19 0JF	1,946	High	1	Construction complete.
23	Arun	Y/19/16/OUT	Application approved 13/10/2017	Land off Burndell Road Yapton	Gleeson Developments Ltd	Outline application for the development of a maximum of 108 residential dwellings,	Residential	Land off Burndell Road Yapton	1,946	High	1	Construction complete.

ID	Planning Authority	Application reference	Date of application and status of development	Development name	Applicant	Brief description of 'other development'	Development type	Location	Distance from proposed DCO Order Limits (m)	Confidence in assessment	Tier <sup>1</sup>	Overlap in temporal scope
						vehicular access from Burndell Road, public open space, ancillary works & associated infrastructure.						
24	Arun	F/4/20/OUT	Application approved 30/05/2023	Land at Ford Airfield Ford Arun Local Plan site SD8 (see ID61)	Redrow Homes Southern Counties, Wates Developments Ltd, Barton Willmore	Outline planning application (with all matters reserved except for access) for the development of up to 1,500 dwellings (Use Class C3), 60-bed care home (Use Class C2), up to 9,000 sqm of employment floorspace (Use Classes B1), local centre of up to 2,350 sqm including up to 900 sqm retail / commercial (Use Classes A1-A5) and 1,450 sqm community / leisure floorspace (Use Classes D1-D2), land for a two-form entry primary school (Use Class D1), public open space, allotments, new sports pitches and associated facilities, drainage, parking and associated access, infrastructure, landscape, ancillary and site preparation works, including demolition of existing buildings and part	Mixed use	Land at Ford Airfield Ford	732	High	1	Anticipated that construction will take place 2025 – 2035.

ID	Planning Authority	Application reference	Date of application and status of development	Development name	Applicant	Brief description of 'other development'	Development type	Location	Distance from proposed DCO Order Limits (m)	Confidence in assessment	Tier <sup>1</sup>	Overlap in temporal scope
						removal of existing runway hardstanding.						
25	Arun	LU/110/22/ES O	Negative screening decision (EIA not required): decision 27/04/2022	Land north of Littlehampton Academy	West Susses Property Development LLP	Screening Opinion for the delivery of approximately 110 No residential dwellings over approximately 4.2ha of the site to include a linked network of open green spaces and a landscape strategy.	Residential	Land North of Littlehampton Academy Littlehampton BN17 6FE	1,276	Low	3	Detail not available.
26	West Sussex	WSCC/027/18/F	Application approved 15/08/2019	Ford Circular Technology Park  Arun Local Plan site SD8 (see ID61)	Grundon Waste Management Ltd	Application for the construction of a new access road which would link the Ford Circular Technology Park site (from the south eastern corner of the site) to the existing access road serving both Southern Water's Ford Waste Water Treatment Works and Viridor's Materials Recycling Facility (MRF), which then joins Ford Road. The proposed new access road would replace the existing access arrangements currently leading to and from the Ford Circular Technology Park site, with all traffic entering and leaving from the south and the A259.	Highways	Ford Airfield Industrial Estate, Ford, Arundel, BN18 0HY	967	High	1	Construction complete.

ID	Planning Authority	Application reference	Date of application and status of development	Development name	Applicant	Brief description of 'other development'	Development type	Location	Distance from proposed DCO Order Limits (m)	Confidence in assessment	Tier <sup>1</sup>	Overlap in temporal scope
27	Arun	LU/330/18/PL	Application approved 14/08/2019	Land South of Cornfield Close	Clarion Housing	Demolition of existing buildings and the erection of 77 residential homes with associated access and associated infrastructure.	Residential	Land South of Cornfield Close Littlehampton BN17 6LD	1,271	High	1	Anticipated that construction will take place 2019 – 2024.
28	Arun	LU/201/16/RE S	Application approved 05/05/2017	Windroos Nursery	Armon	Approval of reserved matters following outline consent LU/229/10 for appearance, landscaping, layout, and scale for 84 dwellings.	Residential	Windroos Nursery Worthing Road Littlehampton BN17 6LY	1,083	High	1	Construction complete.
29	Arun	A/45/22/PL	Application approved (after appeal) 21/10/2022	Rustington Golf Centre, Angmering	Barratt David Wilson Homes	Erection of 167 No residential homes in a mix of 1 - 4 bedroom properties (2-4 bedroom homes and 1 bedroom apartments), with associated landscaping, parking, open space, play areas, construction of a new vehicular access from Golfers Lane and all other associated development works (resubmission following A/129/21/PL [Project ID 30]).	Residential	Rustington Golf Centre Golfers Lane Angmering BN16 4NB	1,748	High	1	Anticipated that construction will take place 2023 – 2030.
30	Arun	A/129/21/PL	Application approved (after appeal) 21/10/2022	Rustington Golf Centre, Angmering	Barratt David Wilson Homes	Erection of 191 residential homes in a mix of 1 - 4 bedroom dwellings and 1 bedroom apartments,	Residential	Rustington Golf Centre Golfers Lane Angmering BN16 4NB	1,748	High	1	Anticipated that construction will take place 2023 – 2030.

ID	Planning Authority	Application reference	Date of application and status of development	Development name	Applicant	Brief description of 'other development'	Development type	Location	Distance from proposed DCO Order Limits (m)	Confidence in assessment	Tier <sup>1</sup>	Overlap in temporal scope
						with associated landscaping, parking, open space, play areas, construction of a new access from Golfers Lane, and all other associated works.						
31	Arun	A/169/17/OUT	Application approved 15/01/2018	Land west of Brook Lane & South of A259 Angmering	Store Property Investments Limited	Outline application with all matters reserved for demolition of existing buildings on site & erection of a mixed use development comprising up to 90 residential units, a care home and ancillary facility (resubmission following A/44/17/OUT).	Mixed use	Land west of Brook Lane & South of A259 Angmering	1,205	High	1	Anticipated that construction will take place 2019 – 2025.
32	Arun	LU/355/10/	Application approved 23/02/12	Development of land at Courtwick	Gleeson Developments Ltd	Outline application with some matters reserved for mixed use development comprising: up to 600 residential dwellings (including up to 30% affordable housing), up to 4,000 sqm of Class B1a and B1b employment floorspace, up to 235 sqm of Class A1/A2/A3 local facilities, structural planting and landscaping, multi-functional green infrastructure	Mixed use	Courtwick Lane Land South of Railway Littlehampton	Within proposed DCO Order Limits	High	1	Construction complete.

ID	Planning Authority	Application reference	Date of application and status of development	Development name	Applicant	Brief description of 'other development'	Development type	Location	Distance from proposed DCO Order Limits (m)	Confidence in assessment	Tier <sup>1</sup>	Overlap in temporal scope
						including sports pitches (and associated changing facilities), informal open space, children's play areas, allotments and surface water attenuation, on-site pedestrian/cycle/bus emergency only access from Courtwick Lane and ancillary works.						
33	Arun	LU/347/14/RES	Application approved 01/09/2015	Land North of Toddington Lane	Persimmon Homes Ltd	Approval of Reserved Matters following Outline Application LU/47/11 for Construction of 114 dwellings and associated works.	Residential	Land North of Toddington Lane Littlehampton BN17 7PP	425	High	1	Construction complete.
34	Arun	A/76/20/PL	Application approved 09/02/2021	Land at Dappers Lane Arun Local Plan site SD9 (see ID62)	Persimmon Homes	84 No residential dwellings, public open space, play areas, associated infrastructure & landscaping.	Residential	Land at Dappers Lane Angmering	551	High	1	Anticipated that construction will take place 2021 – 2027.
35	Arun	A/40/18/OUT	Application approved 27/08/19	Land north of Water Lane	Rydon Homes & Gleeson Strategic Land	Outline application with some matters reserved for the development of up to 525 residential dwellings (Class C3), 3 ha (gross) of employment land (Class B1), public open space, play areas, access, associated	Mixed use	Land North of Water Lane Angmering	412	High	1	Anticipated that construction will take place 2021 – 2029.

ID	Planning Authority	Application reference	Date of application and status of development	Development name	Applicant	Brief description of 'other development'	Development type	Location	Distance from proposed DCO Order Limits (m)	Confidence in assessment	Tier <sup>1</sup>	Overlap in temporal scope
						infrastructure, and landscaping.						
36	Arun	A/122/19/OUT	Application approved 17/03/2020	Land off Arundel Road	Gladman Developments Limited	Outline application with some matters reserved for the erection of up to 160 dwellings with public open space, landscaping and sustainable drainage systems, vehicular access point from Arundel Road; together with up to 1,393 square metres (15,000 square feet) of Class B1/B2 units with associated parking provision and vehicular access point from Arundel Road and land made available for expansion of current sports pitch provision (following the demolition of existing commercial units and one bungalow) (re-submission following A/36/18/OUT).	Mixed use	Land off Arundel Road Angmering BN16 4ET	211	High	1	Anticipated that construction will take place 2020 – 2025.
37	Arun	AB/135/20/OUT	Application approved 26/11/2021	Land at Ford Road Arundel	The Norfolk Estate	Outline application for the development of 90 residential dwellings and associated amenity land.	Residential	Land at Ford Road Arundel	1,857	High	1	Anticipated that construction will take place 2022 – 2027.



ID	Planning Authority	Application reference	Date of application and status of development	Development name	Applicant	Brief description of 'other development'	Development type	Location	Distance from proposed DCO Order Limits (m)	Confidence in assessment	Tier <sup>1</sup>	Overlap in temporal scope
38	South Downs National Park Authority (SDNPA)	SDNP/18/0499 5/FUL	Application approved 14/03/2019	North Farm London Road	Wiston Estate	Hybrid application (Part Full/Part Outline) for demolition of existing equestrian and agricultural buildings. Change of use of existing buildings and extension of existing Winery to provide enhanced storage, visitor facilities, retail, and Cafe. New commercial floorspace, five self-contained holiday let units, closure of existing direct access off the A24 with associated alterations to internal roads. Provision of new permissive Public Right of Way, associated infrastructure, car parking and landscaping works (4.19ha).	Mixed use	North Farm London Road (A24) Washington West Sussex RH20 4BB	891	High	1	Anticipated that construction will take place 2020 – 2032.
39	West Sussex	WSCC/028/21	Application pending a decision: submitted 14/07/2021	Rock Common Quarry	Dudman (Rock Common) Limited and The Wiston Estate	The continued winning, working and processing of sand from the existing Rock Common Quarry, the importation of inert classified engineering and restoration material, the stockpiling and treating of the imported material, the	Industry (resource extraction)	Rock Common Quarry, The Hollow, Washington, Pulborough, RH20 3DA	Within proposed DCO Order Limits	High	1	Continuation of existing site use, no additional construction required.

ID	Planning Authority	Application reference	Date of application and status of development	Development name	Applicant	Brief description of 'other development'	Development type	Location	Distance from proposed DCO Order Limits (m)	Confidence in assessment	Tier <sup>1</sup>	Overlap in temporal scope
						placement of the imported material.						
40	South Downs	SDNP/20/02655/SCREEN	Negative screening decision (EIA not required): decision 15/06/2020	Land West of Ravenscroft	A2 Dominion	Screening opinion request for the erection of approximately 85 no residential dwellings, with the associated vehicular and pedestrian access, as well as a community parkland.	Residential	Land West of Ravenscroft Greyfriars Lane Storrington West Sussex	809	Low	3	Detail not available.
41	SDNP	SDNP/21/04702/OUT	Application refused: decision 22/04/2022 - appeal in progress (awaiting decision)	Land West of Ravenscroft	A2 Dominion	Hybrid application consisting of full permission for the relocation and enhancement of the Ravenscroft Allotment site and Outline Planning Permission for up to 78 homes with all matters reserved except access (excluding internal estates roads) from Ravenscroft, and new community parkland.	Residential	Land East of Greyfriars Lane Storrington West Sussex	810	High	1	Anticipated that construction will take place 2024 – 2030.
42	West Sussex	WSCC/044/18/SR	Application approved 08/01/2020	Sandgate Park Quarry	Inert Recycling Limited and CEMEX UK Operations Limited	Continuation of working the mineral (sand extraction), but with an enhanced restoration scheme for nature conservation and informal recreation involving the importation of 1.8 million tonnes of inert	Industry (resource extraction)	Sandgate Park Quarry, Water Lane, Washington, Pulborough, RH20 4AS	79	High	1	Continuation of existing site use, no additional construction required.

ID	Planning Authority	Application reference	Date of application and status of development	Development name	Applicant	Brief description of 'other development'	Development type	Location	Distance from proposed DCO Order Limits (m)	Confidence in assessment	Tier <sup>1</sup>	Overlap in temporal scope
						material over a period of 11 years.						
43	Horsham	DC/18/2095	Application approved 28/02/2020	Thakeham Tiles Ltd	Thakeham Concrete Products Ltd & Thakeham Trust	Outline planning application for the demolition of all existing buildings, the erection of 90 dwellings with associated works and the formation of a new access onto Rock Road.	Residential	Thakeham Tiles Ltd Rock Road Storrington Pulborough West Sussex RH20 3AD	982	High	1	Anticipated that construction will take place 2020 – 2025.
44	Horsham	DC/15/2788	Application approved 15/12/2016	Land at Robell Way	Barratt Homes	The demolition of the existing buildings on site and the erection of 98 residential dwellings, with associated amenity space and parking. The retention of the existing access from Robell Way, and the creation of a new pedestrian and cycle access from Sullington Copse.	Residential	Paula Rosa Kitchens Robell Way Storrington Pulborough West Sussex RH20 3DS	1,597	High	1	Construction complete.
45	Horsham	DC/19/2015	Application approved 15/05/2020	Land North of Downsview Avenue	Welbeck Strategic Land II LLP	Outline planning application for the erection of up to 62 residential units and the creation of a new vehicle access.	Residential	Land North of Downsview Avenue Storrington RH20 4LU	1,811	High	1	Anticipated that construction will take place 2020 – 2025.
46	Horsham	DC/21/0749	Application pending a decision: submitted 30/03/2021	Land North of Downsview Avenue	Croudace Homes	Reserved matters application for the erection of up to 62 residential units and the creation of a new vehicle access following approval of	Residential	Land North of Downsview Avenue Storrington RH20 4LU	1,811	High	1	Anticipated that construction will take place 2020 – 2025.

ID	Planning Authority	Application reference	Date of application and status of development	Development name	Applicant	Brief description of 'other development'	Development type	Location	Distance from proposed DCO Order Limits (m)	Confidence in assessment	Tier <sup>1</sup>	Overlap in temporal scope
						outline application DC/19/2015 [Project ID 45] relating to appearance, landscaping, layout, scale, and associated works.						
47	Horsham	DC/20/1697	Application refused: decision 19/02/2021 - appeal in progress (awaiting decision)	Land North of The Rosary	Reside Developments Ltd.	Outline application for the erection of 81 no residential dwellings and associated public open space, landscaping, vehicular access, drainage, and highways infrastructure works.	Residential	Land North of The Rosary Church Road Partridge Green West Sussex RH13 8JS	757	High	1	Anticipated that construction will take place 2024 – 2029.
48	Mid Sussex	DM/21/0792	Negative screening decision (EIA not required): decision 19/03/2021	Battery Energy Storage Facility at Bolney	Envirotech Energy Solutions Ltd	Screening opinion request for development of a battery energy storage facility and associated infrastructure.	Energy storage	South Of Bolney Substation Wineham Lane Wineham Henfield West Sussex BN5 9AZ	62	Low	3	Detail not available.
49	Mid Sussex	DM/21/2276	Application pending a decision: submitted 14/06/2021	Battery Energy Storage Facility at Bolney #2	Bolney Green Energy Hub Ltd	Battery energy storage facility and associated infrastructure.	Energy storage	Land East Of Wineham Lane Wineham West Sussex BN5 9AY	59	High	1	Anticipated that construction will take place 2024 – 2030.
50	Mid Sussex	DM/22/3228	Negative screening decision (EIA not required): decision 18/11/2022	Battery Energy Storage System at Coombe Farm #3	Lightrock Power	Screening opinion request for a proposed 99.9 MW battery energy storage system and associated infrastructure.	Energy storage	Land At Coombe Farm Bob Lane Twineham West Sussex	293	Low	3	Detail not available.

ID	Planning Authority	Application reference	Date of application and status of development	Development name	Applicant	Brief description of 'other development'	Development type	Location	Distance from proposed DCO Order Limits (m)	Confidence in assessment	Tier <sup>1</sup>	Overlap in temporal scope
51	Mid Sussex	DM/20/2554	Negative screening decision (EIA not required): decision 06/08/2020	Ghyll Farm	Open Energi	Screening opinion request for proposed energy storage system and associated equipment.	Energy storage	Land At Corner Of Bob Lane And Wineham Lane Wineham West Sussex BN5 9AY	Within proposed DCO Order Limits	Low	3	Detail not available.
52	Mid Sussex	DM/22/0807	Negative screening decision (EIA not required): decision 29/03/2022	Battery Energy Storage System at Coombe Farm #2	One Planet	Screening opinion request for the proposed battery energy storage system is storing electricity and returning the electricity to the grid when required.	Energy storage	Land Adjacent To Bolney Substation Bob Lane Twineham West Sussex	Within proposed DCO Order Limits	Low	3	Detail not available.
53	Mid Sussex	DM/21/1668	Negative screening decision (EIA not required): decision 25/05/2021	Battery Energy Storage System at Coombe Farm	One Planet	Screening opinion request for the proposed battery storage facility in that it can be described as an industrial installation for the production of electricity.	Energy storage	Land Adjacent To Bolney Substation Wineham Lane Wineham Henfield West Sussex BN5 9AZ	Within proposed DCO Order Limits	Low	3	Detail not available.
54	Mid Sussex	DM/15/0644	Application approved 17/02/2017	Land at Coombe Farm	British Solar Renewables	Generation of electricity through the use of solar photovoltaic panels and associated infrastructure.	Energy generation (solar)	Land at Coombe Farm, Bob Lane, Twineham, West Sussex	21	High	1	Anticipated that construction will take place 2023 – 2025.
55	Mid Sussex	DM/18/4697	Application approved 20/01/2020	Ricebridge Works	Ricebridge Works	Demolition of five existing industrial buildings (1,153sq.m), construction of four	Industrial (general)	Ricebridge Works, Brighton Road, Bolney,	1,996	High	1	Anticipated that construction will take place 2021 – 2028.

ID	Planning Authority	Application reference	Date of application and status of development	Development name	Applicant	Brief description of 'other development'	Development type	Location	Distance from proposed DCO Order Limits (m)	Confidence in assessment	Tier <sup>1</sup>	Overlap in temporal scope
						industrial buildings (4,253sq.m) and associated works.		Haywards Heath, West Sussex, RH17 5NA				
56	Mid Sussex	DM/23/0769	Application pending a decision: submitted 20/03/2023	Battery Energy Storage System at Coombe Farm #4	One Planet	Construction and operation of a battery energy storage system together with all associated equipment, ancillary infrastructure, and landscaping.	Energy storage	Land Adjacent To Bolney Substation Bob Lane Twineham West Sussex	Within proposed DCO Order Limits	High	1	Anticipated that construction will take place 2024 – 2027.
57	Mid Sussex	DM/21/4285	Negative screening decision (EIA not required): decision 14/01/2022	Grid Stability Infrastructure at Bolney Substation	WP Grid Services Limited	Screening opinion request for development of grid stability infrastructure at land north of Bolney substation.	Utilities infrastructure (energy)	Land North Of Bolney Substation Wineham Lane Wineham Henfield West Sussex BN5 9AZ	Within proposed DCO Order Limits	Low	3	Detail not available.
58	Mid Sussex	DM/22/2749	Application approved 08/12/2022	The Barns Solar System	Savent Solar Limited	Installation of a 10 kWh ground mounted solar photovoltaic system for domestic use.	Energy generation (solar)	The Barn Nyes Hill Farm Wineham Lane Bolney Haywards Heath West Sussex RH17 5SD	98	High	1	Anticipated that construction will take place 2023 – 2025.
59	West Sussex County Council (WSCC)	WSCC/049/18/LY	Application approved 09/05/2019	Lyminster Bypass	West Sussex County Council	Creation of a 1.1km highway, with shared cycleway and footway, Pegasus crossing, viaduct, culvert, wetland areas, balancing pond and swales,	Highways	East of Lyminster village and between Toddington Nurseries and A284 Lyminster Road,	Within proposed DCO Order Limits	High	1	Construction Q3 2022 - Q3 2024.

ID	Planning Authority	Application reference	Date of application and status of development	Development name	Applicant	Brief description of 'other development'	Development type	Location	Distance from proposed DCO Order Limits (m)	Confidence in assessment	Tier <sup>1</sup>	Overlap in temporal scope
60	Arun	Local Plan site - no reference	Local Plan site	Arun Local Plan - reference site SD4: Littlehampton - West Bank  Policy H SP2b	Allocated in Local Plan - no application at present. Allocated in Local Plan	street lighting and associated works  Allocated in Local Plan with description: proposed site that could provide 1,000 dwellings, provide the West Bank Flood Defence improvements (including flood protection works), new primary school and nursery, new community hub (which includes shops, library facilities, healthcare facilities), public open space, improvements to marina berthing, boat building or other marine related commercial uses, deliver improved access to the river and town centre, and provide improvements to the A259 between Climping and Littlehampton.	Mixed use	Lyminster, Littlehampton  Land west of Littlehampton (Littlehampton - West Bank Strategic Allocation)	552	Low	3	Detail not available.

ID	Planning Authority	Application reference	Date of application and status of development	Development name	Applicant	Brief description of 'other development'	Development type	Location	Distance from proposed DCO Order Limits (m)	Confidence in assessment	Tier <sup>1</sup>	Overlap in temporal scope
61	Arun	Local Plan site - application submitted for majority of site (see ID24) and for access road (see ID26). No application for remainder of local plan site	Local Plan site	Arun Local Plan - reference site SD8: Ford Strategic Allocation  Policy H SP2c	Allocated in Local Plan - see ID24 and ID26 for application applicants for areas of the site.	Allocated in Local Plan with description: proposed site that could provide 1,500 dwellings, sustainable links for all modes of transport linking to the railway station/cycleway, new primary school and nursery, new community hub (which includes shops, library facilities, healthcare facilities), sports pitches, improvements of the A259 between Climping and Littlehampton	Mixed use	Land north of Climping (Ford Strategic Allocation)	660	Low	3	Detail not available.
62	Arun	Local Plan site - application submitted for entire local plan site (see ID34).	Local Plan site	Arun Local Plan - reference site SD9: Angmering North  Policy H SP2c	Allocated in Local Plan - see ID34 application applicant for site.	Allocated in Local Plan with description: proposed site that could provide 800 dwellings, improvements to library services, village health services, and nursery provision, primary school provision, incorporate new employment provision.	Mixed use	Land north of Angmering (Angmering North Strategic Allocation)	Within proposed DCO Order Limits	Low	3	Detail not available.
63	Arun	Local Plan site - application submitted for entire local plan site (see ID14).	Local Plan site	Arun Local Plan - reference site SD10: Climping	Allocated in Local Plan - see ID14 application applicant for site.	Allocated in Local Plan with description: proposed site that could provide 300 dwellings, improvements to	Mixed use	Land south of Climping (Climping Strategic Allocation)	Within proposed DCO Order Limits	Low	3	Detail not available.



ID	Planning Authority	Application reference	Date of application and status of development	Development name	Applicant	Brief description of 'other development'	Development type	Location	Distance from proposed DCO Order Limits (m)	Confidence in assessment	Tier <sup>1</sup>	Overlap in temporal scope
				Policy H SP2c		primary school provision, improvements to A259 between Climping and Littlehampton, community hub (which includes retail/commercial, community facilities, library facility), and provide a controlled crossing on the A259.						
64	Horsham	Local Plan site - no reference	Proposed Local Plan site	Horsham Regulation 18 consultation site SA414 - Mayfield Proposal	Allocated in Local Plan - no application at present. Allocated in Local Plan	Allocated in Local Plan with description: proposed site that could provide around 7,000 dwellings, land for gypsy and traveller accommodation, early years/new primary and secondary schools. Healthcare and other community facilities. Link road to the A23, public transport corridor, active travel corridor and transport hub.	Mixed use	Land north east of Henfield (Mayfield)	1,177	Low	3	Detail not available.

Page intentionally blank

## 3.2 Sources

3.2.1 **Table 3-2** provides the sources of information used to identify developments to be included in the onshore CEA.

**Table 3-2 Sources of information for developments considered in onshore CEA**

Data source	Website	Date reviewed for ES
Planning Inspectorate website	<a href="https://infrastructure.planninginspectorate.gov.uk/projects/south-east/">https://infrastructure.planninginspectorate.gov.uk/projects/south-east/</a>	13/06/2023
Energy infrastructure development applications: decisions 2018-present	<a href="https://www.gov.uk/government/collections/energy-infrastructure-development-applications-decisions">https://www.gov.uk/government/collections/energy-infrastructure-development-applications-decisions</a>	13/06/2023
Energy infrastructure development applications: decisions 2005-2017	<a href="https://webarchive.nationalarchives.gov.uk/20180927103145/https://itportal.beis.gov.uk/EIP/pages/recent.htm">https://webarchive.nationalarchives.gov.uk/20180927103145/https://itportal.beis.gov.uk/EIP/pages/recent.htm</a>	13/06/2023
Transport and Works Act 1992 applications	<a href="https://www.gov.uk/government/groups/transport-and-works-act-team">https://www.gov.uk/government/groups/transport-and-works-act-team</a>	13/06/2023
South Downs National Park Authority	Data provided via GIS from Council	04/05/2023
South Downs National Park Authority	<a href="https://www.southdowns.gov.uk/planning-applications/">https://www.southdowns.gov.uk/planning-applications/</a>	13/06/2023
West Sussex County Council	Data provided via GIS from Council	12/04/2023
West Sussex County Council	<a href="https://www.westsussex.gov.uk/planning/find-a-planning-application/">https://www.westsussex.gov.uk/planning/find-a-planning-application/</a>	13/06/2023
Adur District Council & Worthing Borough Council (outside final search area)	Data provided via GIS from Council	06/04/2023
Adur District Council & Worthing Borough Council (outside final search area)	<a href="https://www.adur-worthing.gov.uk/planning/applications/view/">https://www.adur-worthing.gov.uk/planning/applications/view/</a>	13/06/2023
Arun District Council	Data provided via GIS from Council	21/04/2023

<b>Data source</b>	<b>Website</b>	<b>Date reviewed for ES</b>
Arun District Council	<a href="https://www.arun.gov.uk/weekly-lists">https://www.arun.gov.uk/weekly-lists</a>	13/06/2023
Brighton & Hove City Council (outside final search area)	<a href="https://planningapps.brighton-hove.gov.uk/online-applications/">https://planningapps.brighton-hove.gov.uk/online-applications/</a>	13/06/2023
Chichester District Council (outside final search area)	<a href="https://chichester.gov.uk/viewplanningapplications">https://chichester.gov.uk/viewplanningapplications</a>	13/06/2023
Horsham District Council	Data provided via GIS from Council	27/04/2020
Horsham District Council	<a href="https://public-access.horsham.gov.uk/public-access/">https://public-access.horsham.gov.uk/public-access/</a>	13/06/2023
Lewes District Council (outside final search area)	<a href="https://planningpa.lewes.gov.uk/online-applications/">https://planningpa.lewes.gov.uk/online-applications/</a>	13/06/2023
Mid-Sussex District Council	<a href="https://pa.midsussex.gov.uk/online-applications/search.do?action=simple">https://pa.midsussex.gov.uk/online-applications/search.do?action=simple</a>	13/06/2023
Arun Local Plan 2011-2031	<a href="https://www.arun.gov.uk/adopted-local-plan">https://www.arun.gov.uk/adopted-local-plan</a>	13/06/2023
Adur Local Plan 2017	<a href="https://www.adur-worthing.gov.uk/adur-local-plan/">https://www.adur-worthing.gov.uk/adur-local-plan/</a>	13/06/2023
Chichester Local Plan: Key Policies 2014 - 2029	<a href="https://www.chichester.gov.uk/newlocalplan">https://www.chichester.gov.uk/newlocalplan</a>	13/06/2023
Horsham District Planning Framework 2015	<a href="https://www.horsham.gov.uk/planning/local-plan/read-the-current-local-plan">https://www.horsham.gov.uk/planning/local-plan/read-the-current-local-plan</a>	13/06/2023

### 3.3 References

Infrastructure Planning (Environmental Impact Assessment) Regulations 2017 (as amended). (2017 No. 572) [Online] Available at: <https://www.legislation.gov.uk/uksi/2017/572/contents/made> [Accessed 28 July 2023].

Planning Inspectorate. (2019). *Advice Note Seventeen: Cumulative effects assessment relevant to nationally significant infrastructure projects (Version 2)*. [Online] Available at: <https://infrastructure.planninginspectorate.gov.uk/legislation-and-advice/advice-notes/advice-note-17/> [Accessed 28 July 2023].

RenewableUK and Natural Environment Research Council (NERC). (2013). *Cumulative Impact Assessment Guidelines - Guiding Principles For Cumulative Impact Assessment in Offshore Wind Farms. RUK13-020-2*. [Online] Available at: <https://tethys.pnnl.gov/sites/default/files/publications/Cumulative-Impact-Assessment-Guidelines.pdf> [Accessed 28 July 2023].



Page intentionally blank

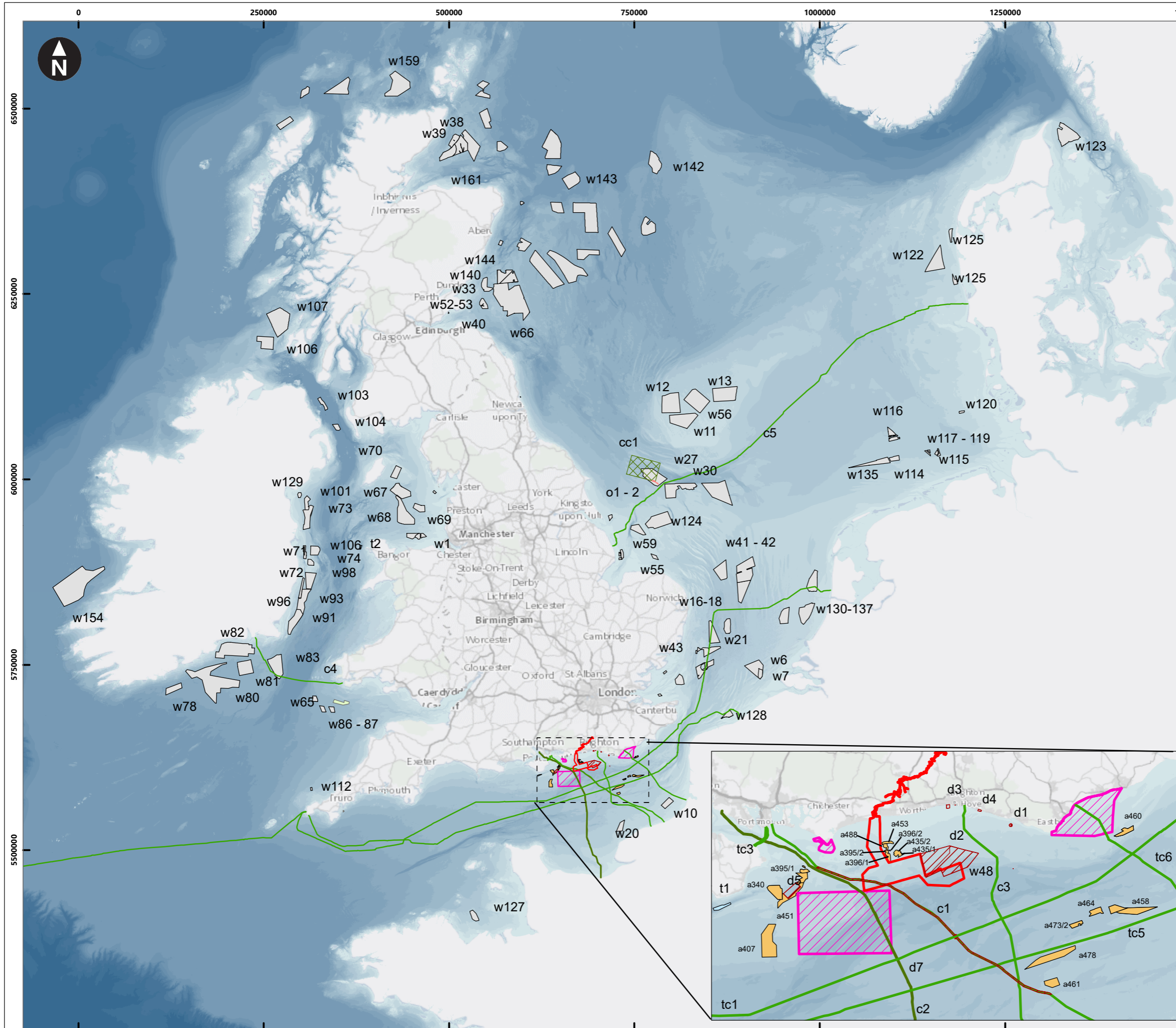
# Annex A

# Figures

---

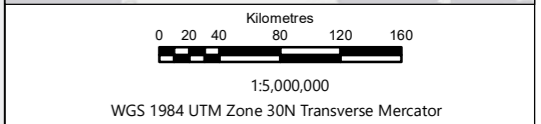
Page intentionally blank





**Key**

- Proposed DCO Order Limits
- Offshore Wind Farm
- Tidal Energy
- Aggregates
- Disposal Site
- MCZ
- CCS
- Wave Energy
- IFA2 Cable
- Cable
- Oil Field

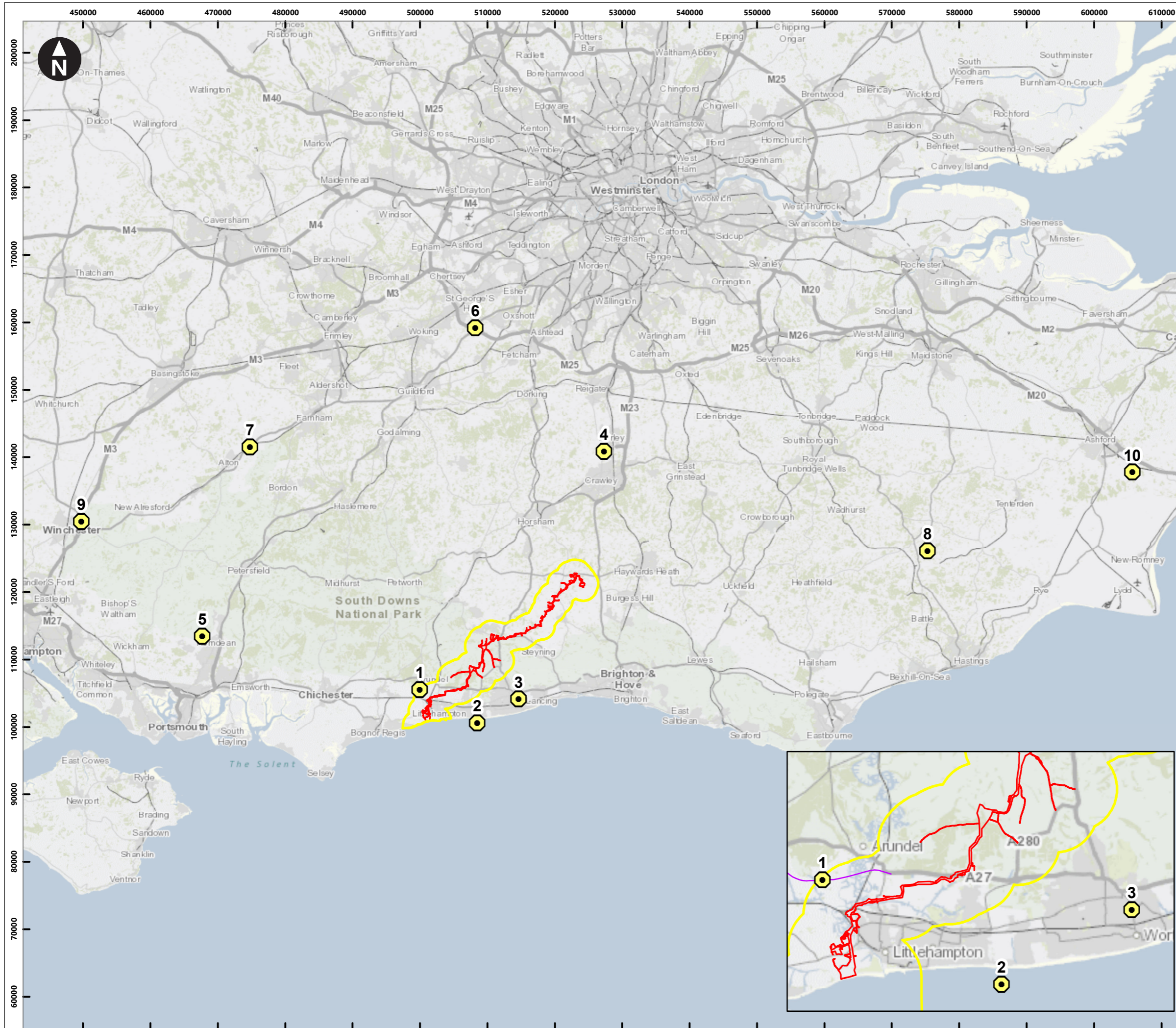


Rampton Extension Development



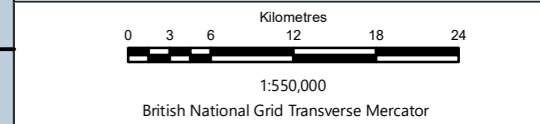
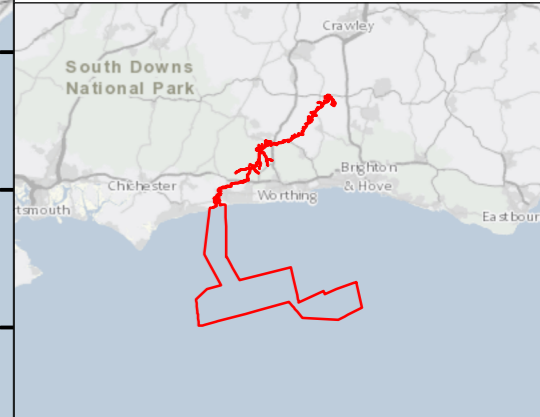
Rampton 2 Offshore Wind Farm  
 Figure 5.4.1  
 Offshore cumulative effects shortlist projects  
 Environmental Statement

System Identifier: 42285-GOBE-PE-CC-FG-O-3639				Version: 1.0
Company: GOBE	Drawn By: SWM	Chk/Aprvd: NH	Drawn Date: 02/08/2023	Status: FINAL



Service Layer Credits: Contains OS data © Crown Copyright and database right 2020  
 © Crown copyright and database rights [2023]  
 Ordnance Survey 0100031673

- Key**
- Proposed DCO Order Limits
  - Cumulative Effects Assessment Zone of Influence
  - Shortlisted DCO and TWAO projects
  - Arundel A27 Bypass
- Cumulative Effects Assessment ID Number
- 1 - A27 Arundel Bypass project
  - 2 - Hampshire Water Transfer and Water Recycling Project
  - 3 - A27 Worthing and Lancing improvement
  - 4 - Gatwick Airport – Northern Runway Project
  - 5 - AQUIND connector
  - 6 - M25 junction 10 / A3 Wisley interchange
  - 7 - Southampton to London Pipeline Project
  - 8 - The Rother Valley Railway (Bodiam to Robertsbridge Junction)
  - 9 - M3 Junction 9 Improvement
  - 10 - Stonestreet Green Solar



Rampion Extension Development



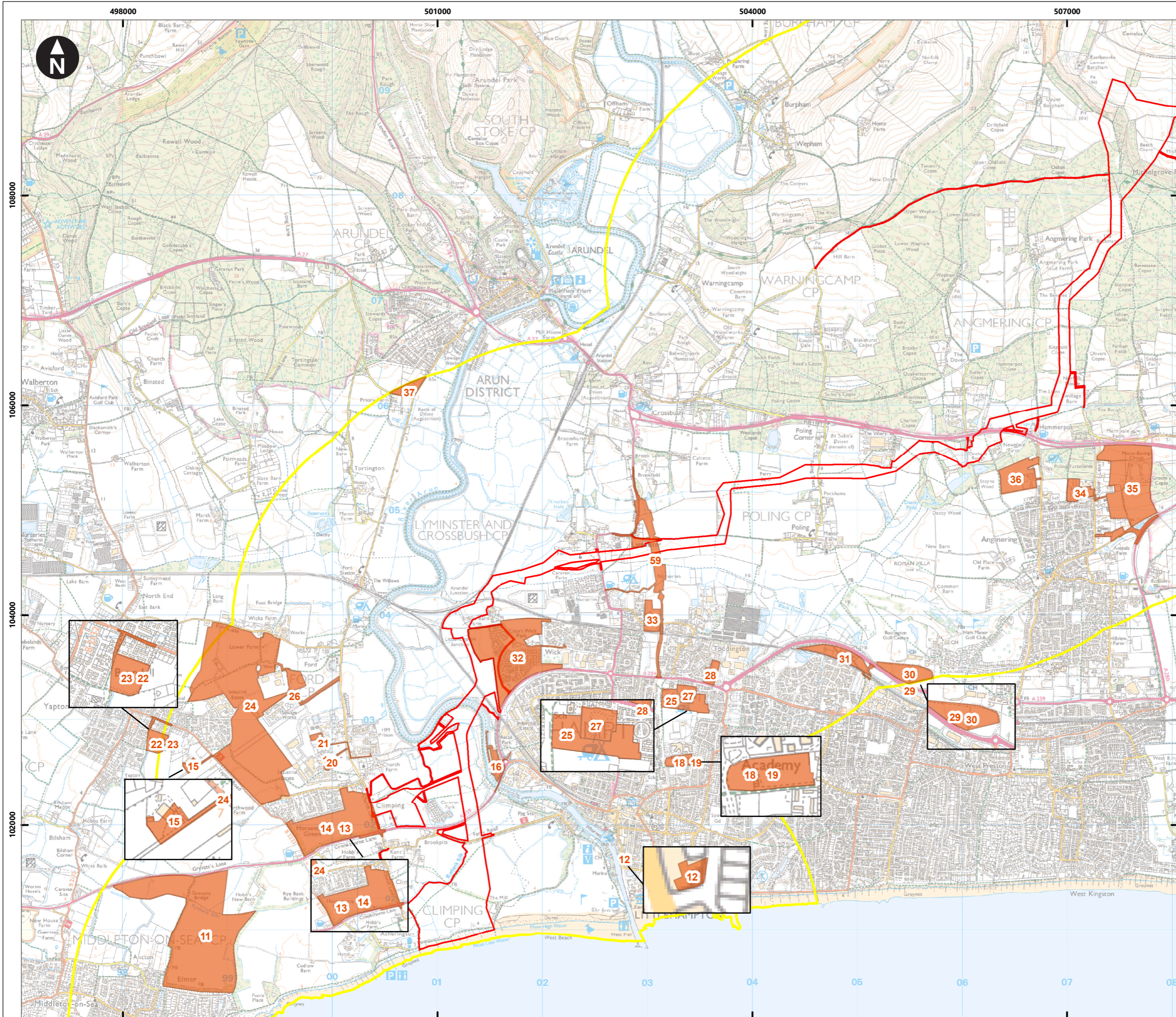
Rampion 2 Offshore Wind Farm

Figure 5.4.2 Onshore cumulative effects assessment shortlist projects - DCO and TWAO Projects

Environmental Statement

System Identifier: 42285-WSPE-ES-CC-FG-O-2361	Version: 1.0
--	-----------------

Company: WSP	Drawn By: SUTET	Chk/Prvd: RANDR	Drawn Date: 31/07/2023	Status: FINAL
-----------------	--------------------	--------------------	---------------------------	------------------



Service Layer Credits: Contains OS data © Crown Copyright and database right 2020

© Crown copyright and database rights [2023]  
Ordnance Survey 0100031673

**Key**

- Proposed DCO Order Limits
- Cumulative Effects Assessment Zone of Influence
- Shortlisted Cumulative Effects Assessment - TCPA projects

Cumulative Effects Assessment ID Number (continues in second window below)

- 11 - Bognor Regis Golf Club
- 12 - 46a & 47 Pier Road & Land north of Clifton Road
- 13 - Land at Climping Arun Local Plan site SD10
- 14 - Land West of Church Lane & South of Horsemere Green Lane Climping
- 15 - Burndell Road
- 16 - Rudford Industrial Estate
- 18 - Land to the South of Littlehampton Academy
- 19 - Land South of The Littlehampton Academy
- 20 - Unit H6 Rudford Industrial Estate
- 21 - HM Prison Ford Road
- 22 - Land off Burndell Road
- 23 - Land off Burndell Road Yapton
- 24 - Land at Ford Airfield Ford Arun Local Plan site SD8 (see ID60)
- 25 - Land north of Littlehampton Academy
- 26 - Ford Circular Technology Park Arun Local Plan site SD8 (see ID60)
- 27 - Land South of Comfield Close
- 28 - Windross Nursery
- 29 - Rustington Golf Centre, Angmering
- 30 - Rustington Golf Centre, Angmering
- 31 - Land west of Brook Lane & South of A259 Angmering
- 32 - Development of land at Courtwick
- 33 - Land North of Toddington Lane
- 34 - Land at Dappers Lane Arun Local Plan site SD9 (see ID61)
- 35 - Land north of Water Lane
- 36 - Land off Arundel Road
- 37 - Land at Ford Road Arundel
- 59 - Lyminster Bypass

0 0.175 0.35 0.7 1.05 1.4  
Kilometres

1:35,000  
British National Grid Transverse Mercator

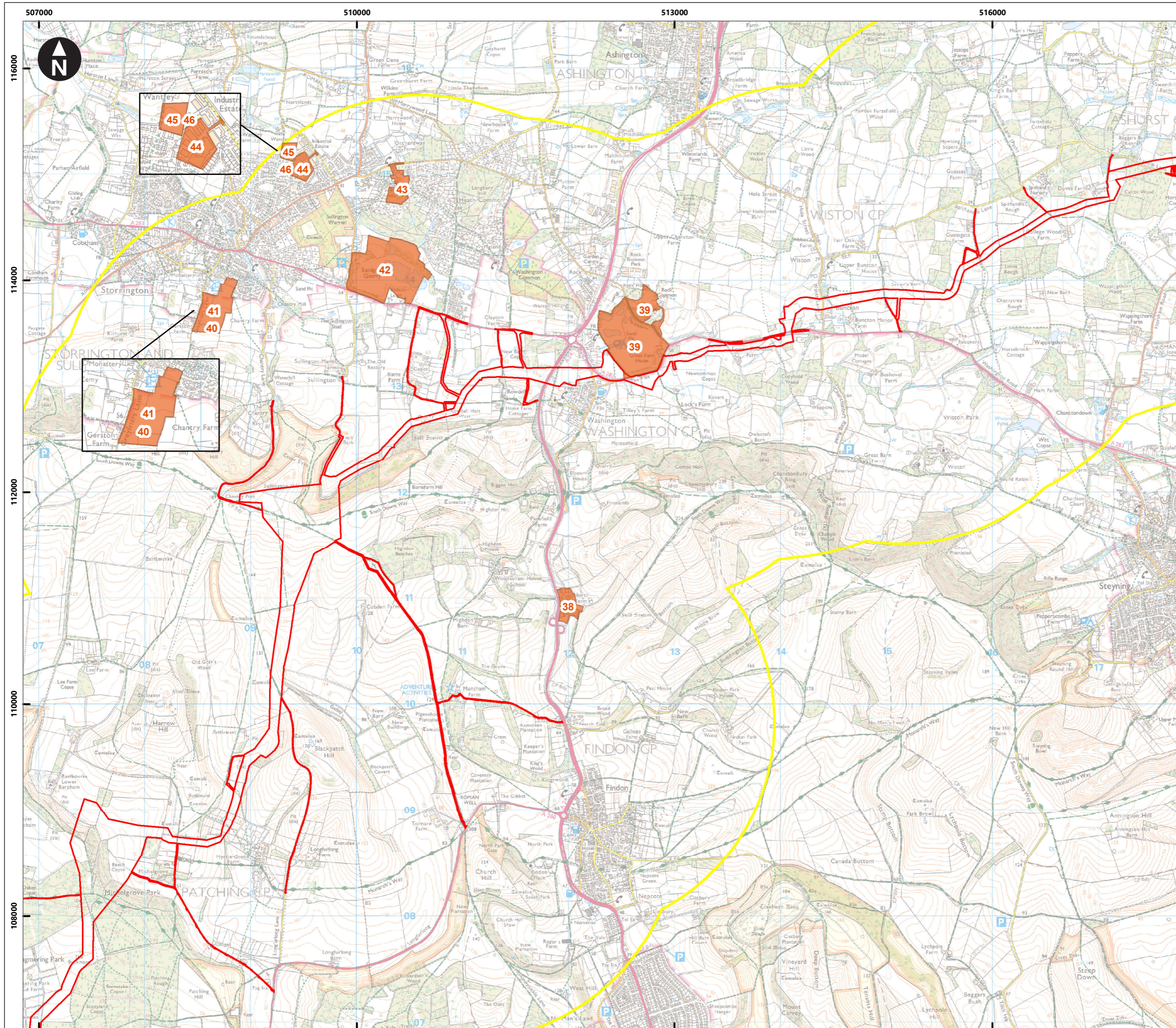
Rampion Extension Development

Rampion 2 Offshore Wind Farm

Figure 5.4.3a Onshore cumulative effects assessment shortlist projects – TCPA projects

Environmental Statement

System Identifier: 42285-WSP-ES-CC-FG-O-9810		Version: 1.0
Company: WSP	Drawn By: SUTET	Chk/Prvrd: RANDR
Drawn Date: 28/07/2023	Status: FINAL	



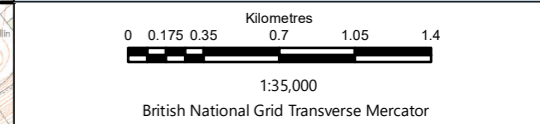
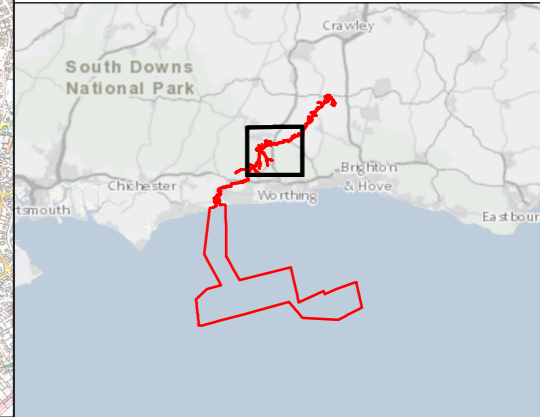
Service Layer Credits: Contains OS data © Crown Copyright and database right 2020  
 © Crown copyright and database rights [2023]  
 Ordnance Survey 0100031673

**Key**

- Proposed DCO Order Limits
- Cumulative Effects Assessment Zone of Influence
- Shortlisted Cumulative Effects Assessment - TCPA projects

Cumulative Effects Assessment ID Number (continues in second window below)

- 38 - North Farm London Road
- 39 - Rock Common Quarry
- 40 - Land West of Ravenscroft
- 41 - Land West of Ravenscroft
- 42 - Sandgate Park Quarry
- 43 - Thakeham Tiles Ltd
- 44 - Land at Robell Way
- 45 - Land North of Downsview Avenue
- 46 - Land North of Downsview Avenue



Rampion Extension Development



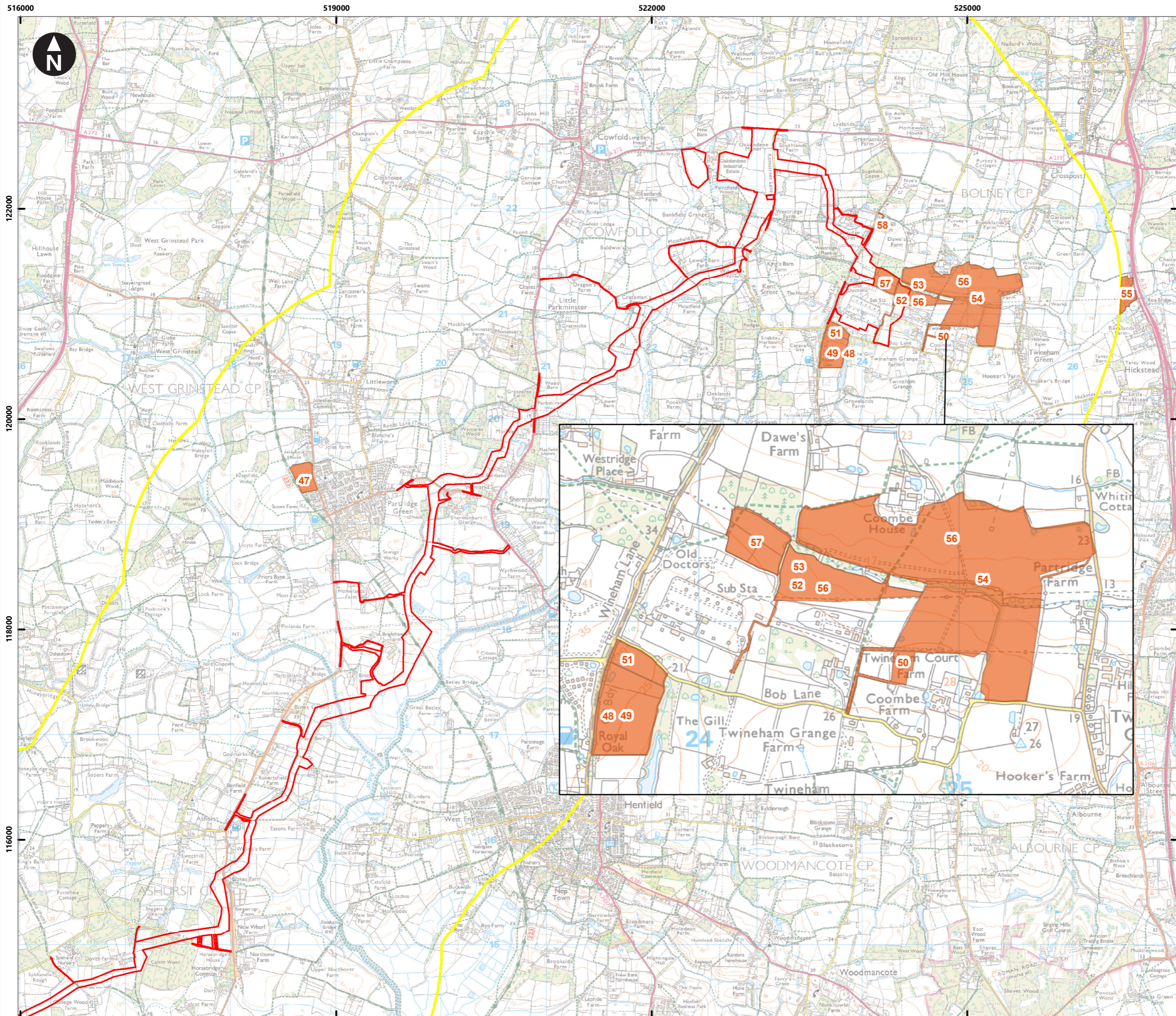
Rampion 2 Offshore Wind Farm

Figure 5.4.3b Onshore cumulative effects assessment shortlist projects – TCPA projects

Environmental Statement

System Identifier:	Version:
42285-WSPE-ES-CC-FG-O-9810	1.0

Company:	Drawn By:	Chk/Prvrd:	Drawn Date:	Status:
WSP	SUTET	RANDR	28/07/2023	FINAL



Service Layer Credits: Contains OS data © Crown Copyright and database right 2020

© Crown copyright and database rights [2023]  
Ordnance Survey 0100031673

**Key**

- Proposed DCO Order Limits
- Cumulative Effects Assessment Zone of Influence
- Shortlisted Cumulative Effects Assessment - TCPA projects

Cumulative Effects Assessment ID Number (continues in second window below)

- 47 - Land North of The Rosary
- 48 - Battery Energy Storage Facility at Bolney
- 49 - Battery Energy Storage Facility at Bolney #2
- 50 - Battery Energy Storage System at Coombe Farm #3
- 51 - Ghyll Farm
- 52 - Battery Energy Storage System at Coombe Farm #2
- 53 - Battery Energy Storage System at Coombe Farm
- 54 - Land at Coombe Farm
- 55 - Ricebridge Works
- 56 - Battery Energy Storage System at Coombe Farm #4
- 57 - Grid Stability Infrastructure at Bolney Substation
- 58 - The Barns solar system

0 0.175 0.35 0.7 1.05 1.4  
Kilometres

1:35,000  
British National Grid Transverse Mercator

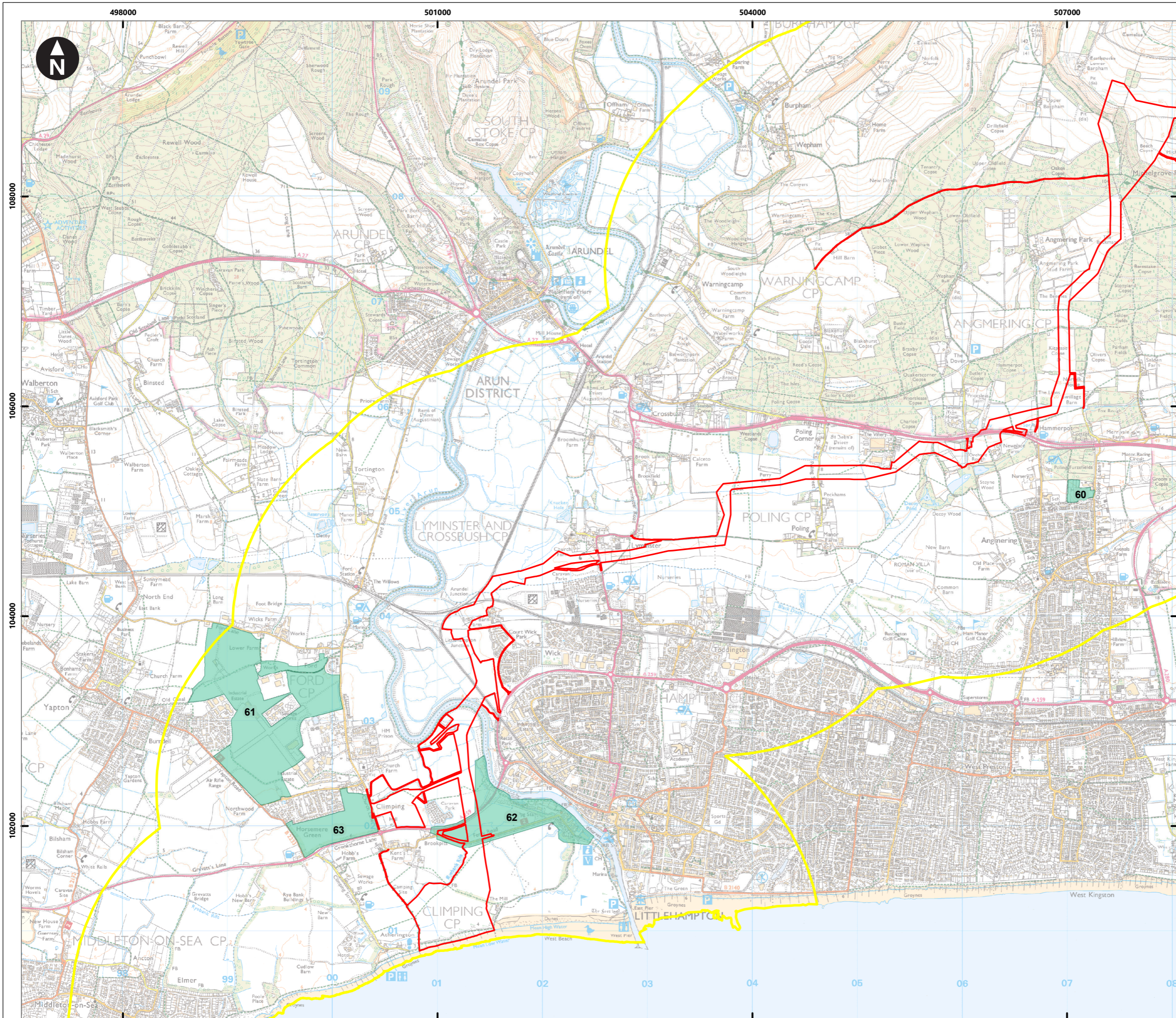
Rampion Extension Development

Rampion 2 Offshore Wind Farm

Figure 5.4.3c Onshore cumulative effects assessment shortlist projects – TCPA projects

Environmental Statement

System Identifier: 42285-WSPE-ES-CC-FG-O-9810		Version: 1.0
Company: WSP	Drawn By: SUTET	Chk/Prvrd: RANDR
Drawn Date: 28/07/2023	Status: FINAL	



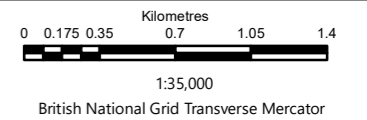
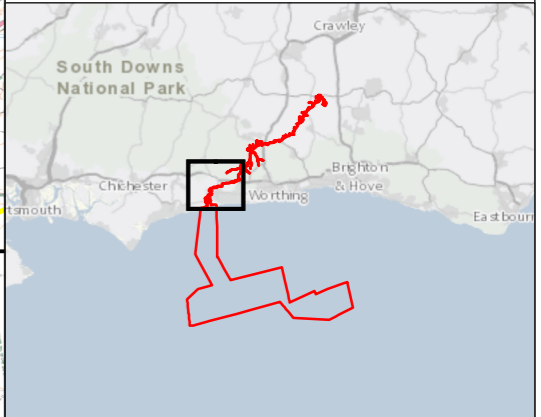
Service Layer Credits: Contains OS data © Crown Copyright and database right 2020

© Crown copyright and database rights [2023]  
Ordnance Survey 0100031673

**Key**

- Proposed DCO Order Limits
- Cumulative Effects Assessment Zone of Influence
- Strategic Local Plan Sites

Cumulative Effects Assessment ID Number  
 60 - Arun Local Plan - reference site SD4: Littlehampton - West Bank - Policy H SP2b  
 61 - Arun Local Plan - reference site SD8: Ford Strategic Allocation - Policy H SP2c  
 62 - Arun Local Plan - reference site SD9: Angmering North - Policy H SP2c  
 63 - Arun Local Plan - reference site SD10: Climping - Policy H SP2c



Rampion Extension Development



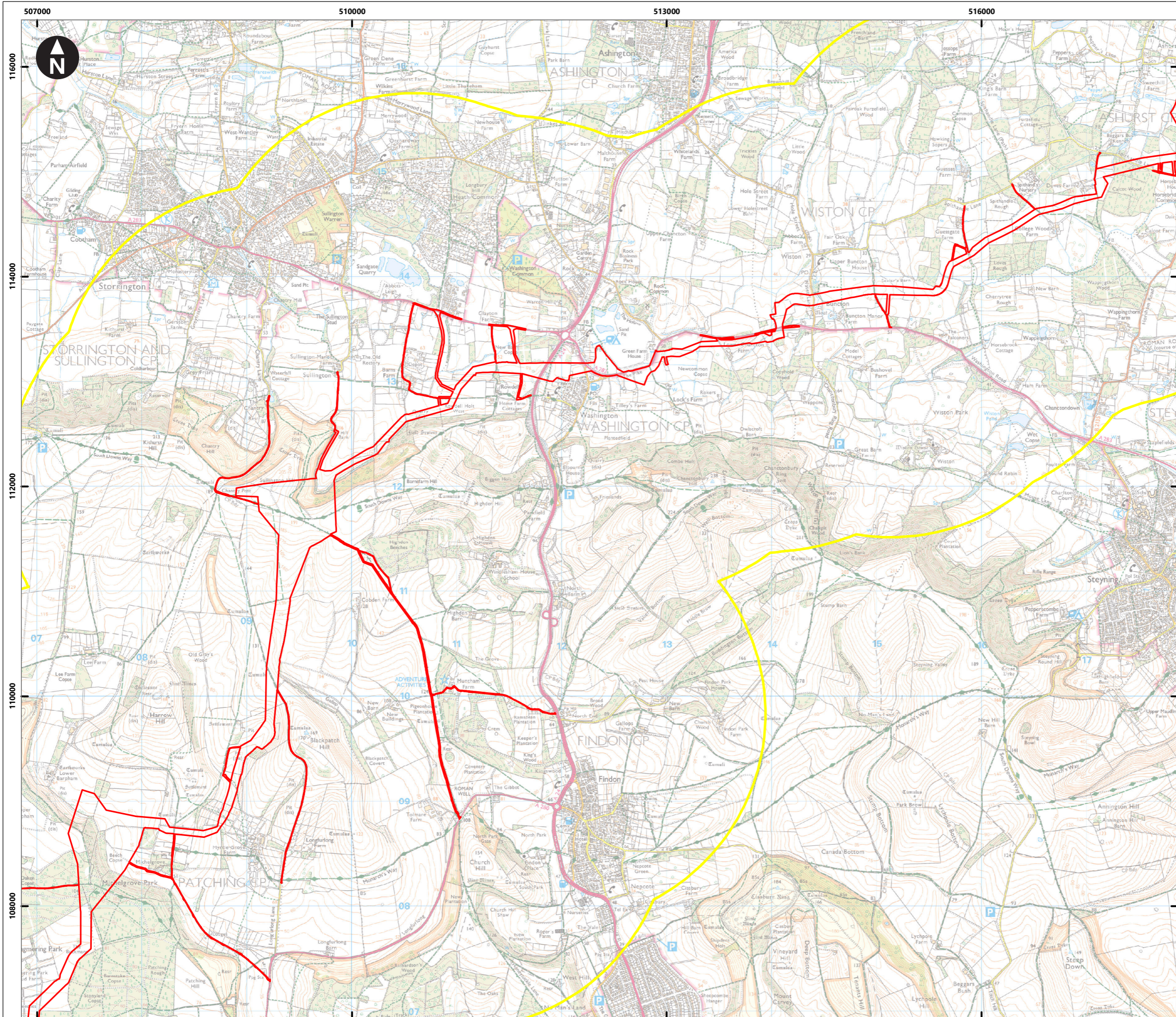
Rampion 2 Offshore Wind Farm

Figure 5.4.4a Onshore cumulative effects assessment shortlist projects – Strategic Local Plan sites

Environmental Statement

System Identifier:	Version:
42285-WSP-ES-CC-FG-O-8228	1.0

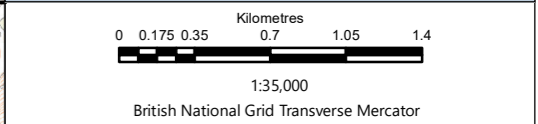
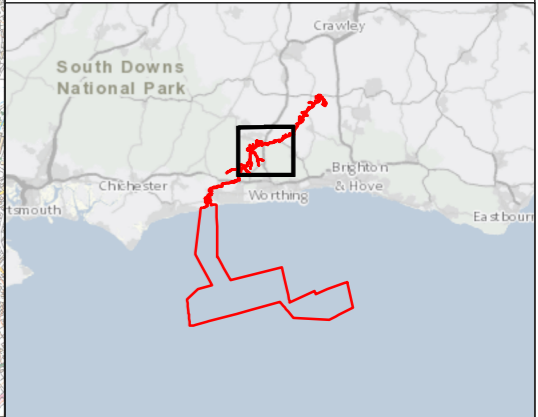
Company:	Drawn By:	Chk/Prvd:	Drawn Date:	Status:
WSP	SUTET	RANDR	28/07/2023	FINAL



Service Layer Credits: Contains OS data © Crown Copyright and database right 2020  
 © Crown copyright and database rights [2023]  
 Ordnance Survey 0100031673

**Key**

- Proposed DCO Order Limits
- Cumulative Effects Assessment Zone of Influence



Rampion Extension Development



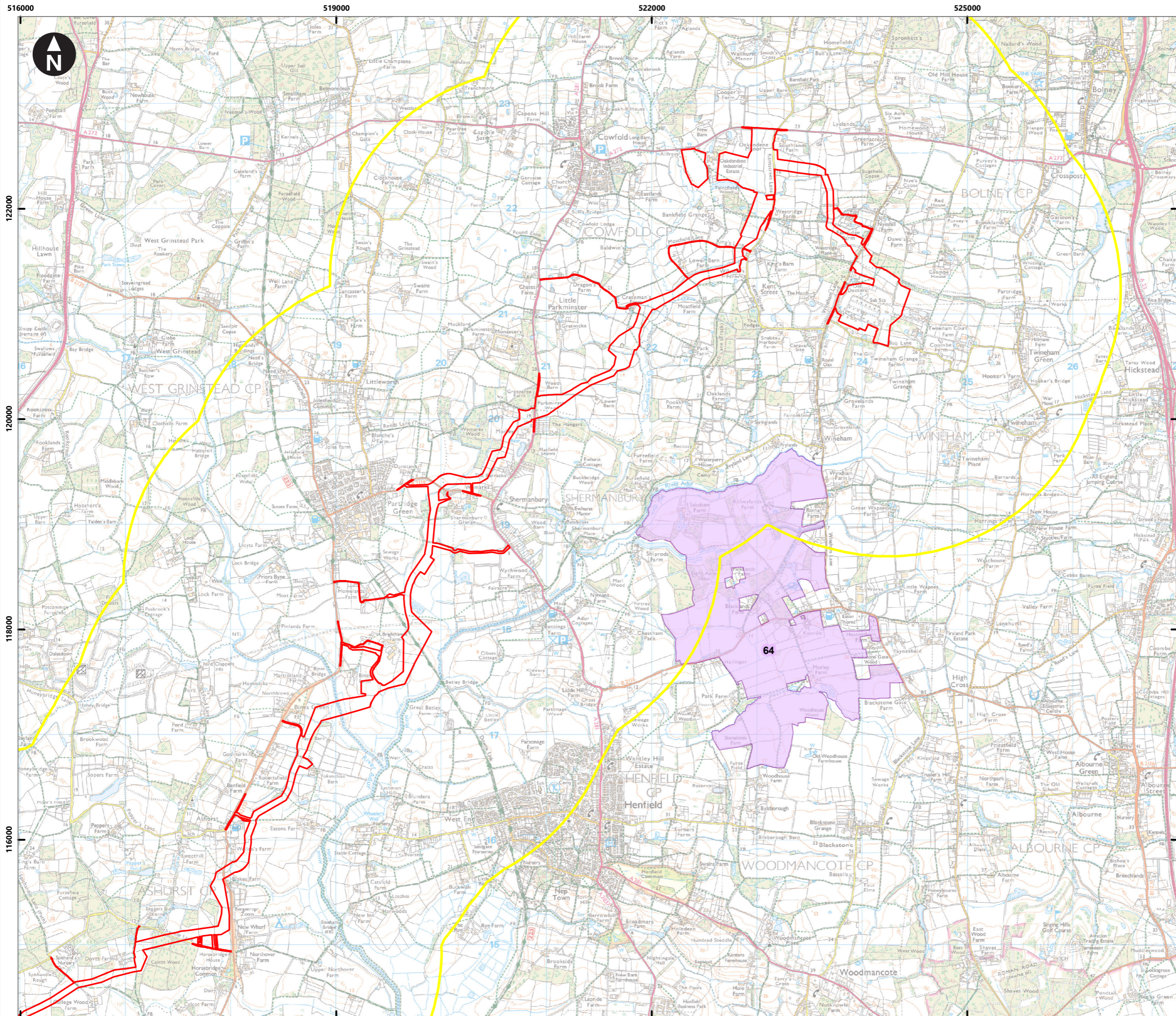
**Rampion 2 Offshore Wind Farm**

Figure 5.4.4b Onshore cumulative effects assessment shortlist projects – Strategic Local Plan sites

Environmental Statement

System Identifier: 42285-WSPE-ES-CC-FG-O-8228		Version: 1.0
--	--	-----------------

Company: WSP	Drawn By: SUTET	Chk/Prvrd: RANDR	Drawn Date: 28/07/2023	Status: FINAL
-----------------	--------------------	---------------------	---------------------------	------------------

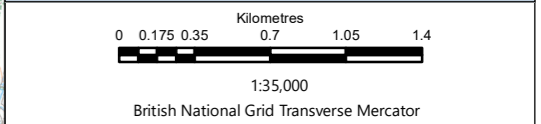
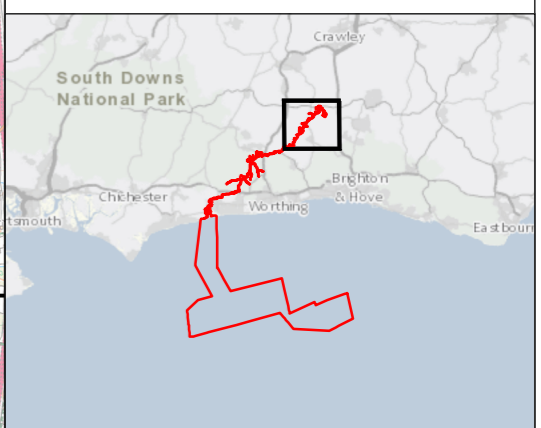


Service Layer Credits: Contains OS data © Crown Copyright and database right 2020  
 © Crown copyright and database rights [2023]  
 Ordnance Survey 0100031673

**Key**

- Proposed DCO Order Limits
- Cumulative Effects Assessment Zone of Influence
- Horsham Council strategic local

Cumulative Effects Assessment ID Number  
 64 - Horsham Regulation 18 consultation site SA414 - Mayfield Proposal



Rampion Extension Development



Rampion 2 Offshore Wind Farm

Figure 5.4.4c Onshore cumulative effects assessment shortlist projects – Strategic Local Plan sites

Environmental Statement

System Identifier: 42285-WSP-ES-CC-FG-O-8228		Version: 1.0
Company: WSP	Drawn By: SUTET	Chk/Prvd: RANDR
Drawn Date: 28/07/2023	Status: FINAL	



Page intentionally blank

